

Venturon Livestock

Annual On-Property
BULL SALE
Sambell Rd Boyup Brook WA
2pm February 21 - 2025

30 Angus & **23** Charolais

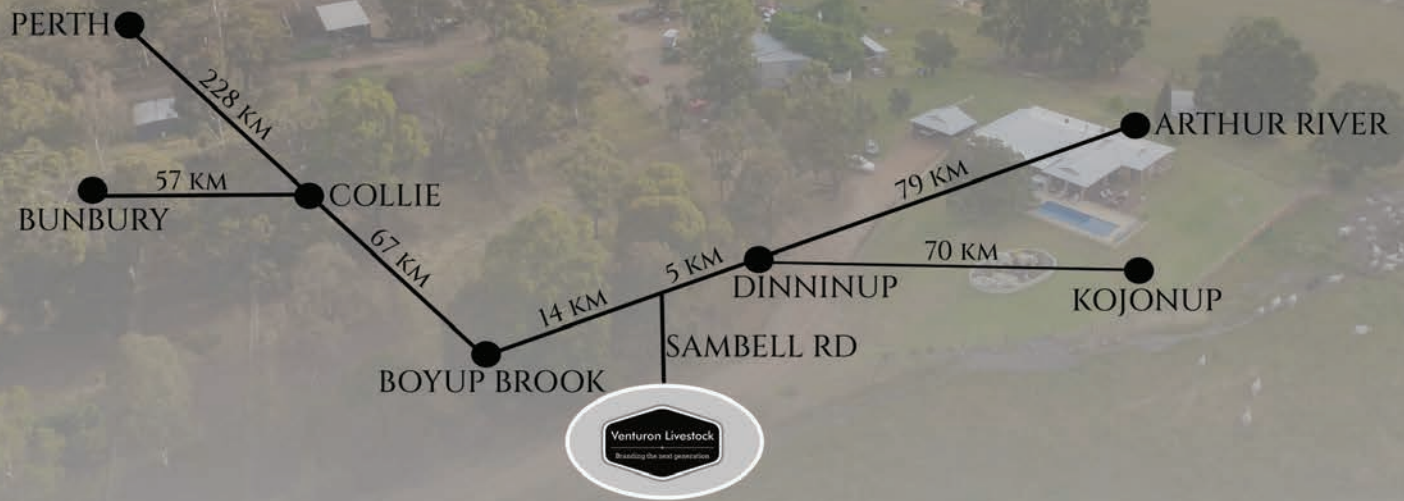


Venturon Livestock

Branding the next generation

Venturon Livestock

Andrew, Anne & Harris Thompson
PO Box 229 Boyup Brook WA 6244



"Venturon" Sambell Rd, Boyup Brook WA

*14 Km from Boyup Brook on the
Boyup Brook - Arthur River Rd*

Andrew - 0429 379 135 | Harris - 0488 493 713 | Anne - 0427 030 167

Call or email Anne for accommodation options



www.venturon.com.au

Venturon Livestock Bull Sale

Friday 21st February 2025 - 2pm (AWST)

Open Day: 30th January from 10am-3pm

and interfaced with



AuctionsPlus

Buy and sell stock nationally

Bulls will be yarded and available for inspection
by 11am on sale day

BULLS WILL BE SOLD BY VIDEO AUCTION

**Undercover on property -
Venturon, Sambell Road, Boyup Brook**

30 ANGUS | 23 CHAROLAIS

PREMIUM LIVESTOCK SOLUTIONS - Tom Wilding-Davies _____ 0429 570 504

Nutrien
Livestock™

Jamie Abbs _____ 0409 001 546
Mark McKay _____ 0477 406 481
Austin Gerhardy _____ 0415 388 954



Deane Allen _____ 0427 421 306
Pearce Watling _____ 0437 844 528
Nathan King _____ 0488 582 455

Welcome THE VENTURON STORY



We welcome everyone to our 5th Annual bull sale in 2025. We must say it doesn't feel like that long since we were compiling our 30th anniversary sale catalogue but then again 12 months sure does go quick in the agricultural industry.

We were again met with half of our average yearly rainfall in 2024 and this has led to water levels at all-time lows for our property. We were fortunate to end the year with great crops and to have a sufficient level of feed on hand.

The state was hit with record low prices for cattle in 2024 in WA and we hope to see the market start to improve as we head into 2025. It was great to start to see the trend of heavier quality weaners being rewarded in the yard, making more money and quality genetics shine through, and we congratulate our clients on success in the sales.

2024 was an extremely successful year for our herd showcasing our genetics across Australia. We were very fortunate to win the Breeders Group of three interbreed award at Sydney with our Charolais and come home with the Grand Champion Charolais male and female. In Perth we continued our success winning the Interbreed Junior Champion Female and Senior Bull. Our Angus had another great year winning the Supreme exhibit and grand champion female at Perth for our 4th consecutive year. It's a massive job campaigning cattle across the country and we are so thankful for our team across the country that make it happen.

We were very pleased to hear of calves hitting the ground in Canada out of our Naughty But Nice donor female at Serhienko Cattle Co in Maymont SK. We also had calves sired by our Murray Grey sire Venturon Rectify R1 born in New Zealand at Premier Cattle and in Europe which is extremely exciting. We also sold the Canadian semen rights in Venturon The Stig T42 to Johnson Charolais and look forward to seeing what he does in Canada.

This year will see us offer the same amount of bulls as last year's sale and are proud to present our most even line yet. Through our numerous ET and Ai programs and sourcing the best genetics from across the world, each year our bulls continue to evolve and improve. This year we are extremely proud of the evenness of the bulls and believe the bulls present fresh and ready to work. The bulls are run in large breed contemporary groups and like anything the cream rises to the top and those are the bulls that are selected for the sale team.

Please note that all of the pictures of the bulls are taken 7-8 weeks before the sale in this catalogue so we strongly recommend you take the time to come out and view the bulls or check out the up-to-date videos that will be available on Auctionsplus and our website early February thanks to the team at Fivestar Creative promotions.

We wish you a safe, healthy and prosperous 2025 and we look forward to it hopefully being the best season yet. Thank you again for choosing VL as your source of genetics and if you require any more information, please get in touch.

Andrew, Anne and Harris Thompson



SHOW RING SUCCESS

Sydney Royal 2024



Interbreed Group of 3 Sydney Royal 2024



Venturon Fiona T216
Jnr Ch Charolais Female
Sydney Royal 2024



Venturon Talladega T192
Gr Ch Charolais Bull
Sydney Royal 2024



Venturon Starstruck 157S
Supreme Charolais Exhibit
Sydney Royal 2024

Perth Royal 2024



Venturon Ultimate Impact U128
Grand Ch Charolais Bull
Perth Royal 2024



Venturon Upon A Star U94
Supreme Angus Exhibit
Perth Royal 2024



Venturon Starstruck 157U
Interbreed Jnr Ch Female
Perth Royal 2024

Branding the next Generation

Venturon Livestock

Branding the next generation

SALE CONDITIONS

- **Venue**

The sale will be held on property - Venturon, Sambell Road, Boyup Brook and online with Auctionsplus.

- **The Sale**

The Selling System we will be utilising will be a video sale. The sale shed is located right next to the bull pens. Bulls will be penned with the ability to view and walk through them. The Auctioneer will sell the bulls by auction with a video of each bull projected onto the screens located in the sale shed, rather than running the bulls through a ring. This system we feel is buyer and animal friendly and works well with modern occupational health and safety requirements.

- **Sale Day Information**

The sale will be conducted under ALPA terms and conditions as displayed in the sale office on sale day. Potential Buyers are to ensure they have registered with the selling agent and received a bid card prior to the commencement of the auction. This sale will also be interfaced with Auctionsplus so if you wish to utilise this platform, please make yourself familiar with the terms and conditions or talk to one of the selling agents if you require assistance. Please ensure if you wish to use this platform you understand the system, appropriate connectivity and pre-register 24 hours prior to the commencement of the auction. This will allow parties unable to attend the sale to bid remotely on lots they may be interested in.

- **Inspection & Sale Time**

The bulls will be yarded and available for inspection from 11am on Sale Day Friday February 21st. Selling to commence at 2pm sharp. Supplementary sheets will be available on sale day or at prior request. Private inspection of the sale team can be arranged prior to sale day by contacting Harris Thompson on 0488 493 713 or Andrew Thompson on 0429 379 135. All times in the catalogue are displayed on AWST.

- **Supplementary Sheet**

Supplementary sheets will be available on sale day or by prior request.

- **GST**

All lots are sold exclusive of GST. GST will be added to the auction sale price of each lot prior to invoicing.

- **Outside Agent Rebate**

Venturon offer a 3% outside agent buyers' rebate to those who nominate their client in writing to the selling agent 24 hours prior to sale and settling within 7 days. Agents must attend the sale with or on behalf of their client on sale day to assist with their purchase.

- **Phone Bidding**

If you require phone bidding, please get in touch with one of our team prior to sale day or talk to one of the selling agents.

- **Insurance**

At the fall of the hammer, Venturon recommend insuring all purchases. There will be an insurance representative onsite sale day to assist you with this.

- **Registration Status / Transfers**

If the animal is listed as registered, it is available for society transfer at the vendor's expense. If you require society transfers, please indicate on the buyer's instruction sheet.

- **Animal Identification**

All bulls are branded and/or tattooed as per breed society regulations. All lots are permanently identified in accordance with the National Livestock Identification Scheme (NLIS). Sale lots will have a sale tag on sale day.

- **Refreshments**

Refreshments and lunch will be available on sale day.

- **Catalogue Photographs**

All catalogue sale photographs were taken on farm the first week of January 2024. The bulls have had little preparation at this point. Please take this into account when viewing bulls.

- **Health**

Venturon Livestock is a JBAS 6 accredited herd. All the bulls in the sale are eligible for entry to all states and territories in Australia. The Bulls in the sale are sold under the Zoetis Star Breeder program and have been vaccinated with 7 in 1, Pestigard, Vibrovax and Rhinogard and have been drenched with Dectomax. All sale bulls have been tested negative for pestivirus. All bulls have been semen tested and scrotal's have been measured by Nutrien Breeding Services, Bunbury, WA.

- **Sale Bull Notes**

Please note the sale bulls have been run in three different management groups. All bulls will be listed on the supplementary sheet with what group they came out of. The bulls have been worked by dogs, vehicles and motorbikes their entire life so when introducing them to new management practises please acclimatise them to it gently. The bulls have not been worked by horses.

• Health and Safety of Visitors

All of the bulls within the sale have undertaken a strict temperament selection process. The bulls are quiet to handle under conditions they are used to in their groups. Sale day poses a range of new things to the bulls that they may not be accustomed with so please take all respect when viewing the bulls. Please be alert for the potential of bulls fighting within the pens. We do not by any means expect the bulls to be aggressive, but the new environment and large number of people can upset even the quietest of bulls. Please do not crowd the bulls or loiter inside the pens, and please use common sense within the pens when viewing them. Please do not hesitate to talk to any of our team or the sale staff if you require assistance in the bull pens, we will be more than happy to help. Visitors enter the sale pens at their own risk. No children to enter sale pens, no dogs allowed on sale day.

• Delivery

Venturon offers free personal delivery within 500km of Venturon. All other transport within WA will be coordinated by Venturon to major centres. We will ensure the bulls are delivered as soon as we can after the sale, there will be no delivery on sale day.

• Eastern States

Venturon will co-ordinate and cover half of the transports costs on route to Falls Livestock Depot, Finley NSW through Falls Livestock Transport. Please get in touch with us for any more information on our transport offers. Upon taking delivery of your new bull, we recommend you have a companion animal or a group of animals for him to go into. It is a big thing for the bulls going into a new environment out of their groups, so we recommend you help make this transition as stress free as possible for them.

• The Venturon Guarantee

All the bulls sold at Venturon come with "The Venturon Guarantee". They come with a two-year Guarantee in the rare event a bull is found to be infertile or unable to breed cows, provided the problem is not caused by injury or disease after taking delivery from Venturon. Upon request, a veterinarian Certificate must be provided by an accredited Veterinarian. Venturon can replace with another sire to get purchaser through the breeding season and will refund the purchase price of the bull less the salvage value of the bull on the first year of purchase. For the second working year of the sire, Venturon will refund 50% of the purchase price less the salvage value of the bull.

• Sale Catalogue Disclaimer

Animal details included in this catalogue, including but not limited to pedigree, DNA information, Estimated Breeding Values (EBVs) and Index values, are based on information provided by the breeder or owner of the animal. Data submitted to the Breed Societies may have errors in it which cannot be detected without further DNA testing. For this reason, users ought to consider if they need to obtain independent testing of the relevant animal (if possible) to ensure the data is accurate. Whilst all reasonable care has been taken to ensure that the information provided in this catalogue was correct at the time of publication, neither the vendor or Charolais Society of Australia, or the selling agents assume any responsibility for the accuracy or completeness of the information, nor for the outcome (including consequential loss) of any action taken based on this information.

• Attention Buyer

Animal details included in this catalogue, including but not limited to pedigree, DNA information, Estimated Breeding Values (EBVs) and Index values, are based on information provided by the breeder or owner of the animal. Whilst all reasonable care has been taken to ensure that the information provided in this catalogue was correct at the time of publication, Angus Australia will assume no responsibility for the accuracy or completeness of the information, nor for the outcome (including consequential loss) of any action taken based on this information.

• Angus Genetic Conditions

Angus bulls have their Genetic Condition status shown on their lot. Further information on Angus genetic conditions can be found on the Angus Australia website www.angusaustralia.com.au

• Guide to Angus Suffix System

The suffix displayed at the end of each animal's name indicates the DNA parentage verification that has been conducted by Angus Australia.

PV: both parents have been verified by DNA

SV: the sire has been verified by DNA

DV: the dam has been verified by DNA

#: DNA verification has not been conducted

E: DNA verification has identified that the sire and/or dam may possibly be incorrect, but this cannot be confirmed conclusively

BREEDPLAN EBV EXPLANATIONS

EBVs

- An animal's breeding value is its genetic merit, half of which will be passed on to its progeny. While we will never know the exact breeding value, for performance traits it is possible to make good estimates. These estimates are called Estimated Breeding Values (EBVs).

Accuracy

- Accuracy (%) is based on the amount of performance information available on the animal and its close relatives - particularly the number of progeny analysed. Accuracy is also based on the heritability of the trait and the genetic correlations with other recorded traits. Hence accuracy indicates the "confidence level" of the EBV. The higher the accuracy value the lower the likelihood of change in the animal's EBV as more information is analysed for that animal or its relatives.

Traits

- Calving Ease EBVs (%) are based on calving difficulty scores, birth weights and gestation length information. More positive EBVs are favourable and indicate easier calving.
- CE % Dir = Direct Calving Ease - The EBV for direct calving ease indicates the influence of the sire on calving ease in purebred females calving at two years of age.
- CE % Daughters = Daughters' Calving Ease - The EBV for daughters' calving ease indicates how easily that sire's daughters will calve at two years of age.
- Gestation Length EBV (days) is an estimate of the time from conception to the birth of the calf and is based on Artificial Insemination & hand mating records. Lower (negative) Gestation Length EBVs indicate shorter gestation length & therefore easier calving & increased growth after birth.
- Birth Weight EBV (kg) is based on the measured birth weight of progeny, adjusted for dam age. The lower the value the lighter the calf at birth and the lower the likelihood of a difficult birth. This is particularly important when selecting sires for use over heifers.
- 200-Day Growth EBV (kg) is calculated from the weight of progeny taken between 80 and 300 days of age. Values are adjusted to 200 days and for age of dam. This EBV is the best single estimate of an animal's genetic merit for growth to early ages.
- 400-Day Weight EBV (kg) is calculated from the weight of progeny taken between 301 and 500 days of age, adjusted to 400 days and for age of dam. This EBV is the best single estimate of an animal's genetic merit for yearling weight.
- 600-Day Weight EBV (kg) is calculated from the weight of progeny taken between 501 and 900 days of age, adjusted to 600 days and for age of dam. This EBV is the best single estimate of an animal's genetic merit for growth beyond yearling age.
- Mature Cow Weight EBV (kg) is based on the cow weight when the calf is weighed for weaning, adjusted to 5 years of age. This EBV is an estimate of the genetic difference in cow weight at 5 years of age and is an indicator of growth at later ages and potential feed maintenance requirements of the females in the breeding herd. Steer breeders wishing to grow animals out to a larger weight may also use the Mature Cow Weight EBV.
- Milk EBV (kg) is an estimate of an animal's milking ability. For sires, this EBV indicates the effect of the daughter's milking ability, inherited from the sire, on the 200-day weights of her calves. For dams, it indicates her milking ability.
- Scrotal Size EBV (cm) is calculated from the circumference of the scrotum taken between 300 and 700 days of age and adjusted to 400 days of age. This EBV is an estimate of an animal's genetic merit for scrotal size. There is also a small negative correlation with age of puberty in female progeny and therefore selection for increased scrotal size will result in reduced age at calving of female progeny.
- Eye Muscle Area EBV (sq cm) is calculated from measurements from live animal ultrasound scans and from abattoir carcass data, adjusted to a standard 300 kg carcass. This EBV estimates genetic differences in eye muscle area at the 12/13th rib site of a 300 kg dressed carcass. More positive EBVs indicate better muscling on animals. Sires with relatively higher Eye Muscle Area EBVs are expected to produce better muscled and higher percentage yielding progeny at the same carcass weight than will sires with lower Eye Muscle Area EBVs.
- Rib Fat and Rump Fat EBVs (mm) are calculated from measurements of subcutaneous fat depth at the 12/13 rib site and the P8 rump site (from live animal ultrasound scans and from abattoir carcasses) and are adjusted to a standard 300 kg carcass. These EBVs are indicators of the genetic differences in fat distribution on a standard 300 kg carcass. Sires with low, or negative, fat EBVs are expected to produce leaner progeny at any particular carcass weight than will sires with higher EBVs.
- Retail Beef Yield EBV (%) indicates genetic differences between animals for retail yield percentage in a standard 300 kg carcass. Sires with larger EBVs are expected to produce progeny with higher yielding carcasses.
- Intramuscular Fat EBV (%) is an estimate of the genetic difference in the percentage of intramuscular fat (marbling) at the 12/13th rib site in a 300 kg carcass. Depending on market targets, larger more positive values are generally more favourable.

Selection Indices

- Selection indices are calculated for market specifications. Index values are reported as EBVs, in units of relative earning capacity (\$'s) for a given market. They reflect both the short-term profit generated by a sire through the sale of his progeny, and the longer-term profit generated by his daughters in a self-replacing cow herd. A selection index combines the EBVs with economic information (costs and returns) for specific market and production systems to rank animals based on relative profit values. Note that different types of animals can give similar profit values, so consideration should be given to both the index and the component EBVs when selecting animals for a particular production system. More information is available on selecting animals using a selection index. The Index values are derived using BreedObject technology. More information is available from the BreedObject web site.

IMPORTANT: EBV's are breed specific and cannot be compared across breeds. Only compare Charolais to Charolais and Angus to Angus.

EBV Quick Reference for Venturon Annual Bull Sale - Mid January 2025 TransTasman Angus Cattle Evaluation

Animal Ident		Calving Ease		Birth		Growth			Maternal			Fertility		Carcass				Other			Structural			Indexes				
		Dir	Dtrs	GL	BW	200W	400W	600W	MCW	MBC	MCH	Milk	SS	DTC	CWT	EMA	Rib	Rump	RBV	IMF	NFI-F	Doc	CS	FA	LA	\$A	\$A-L	
1	RTT23U9	+5.9	+0.4	-2.1	+2.6	+4.3	+78	+109	+62	+0.39	+5.6	+25	+3.7	-3.5	+52	+12.5	+0.3	+2.7	-0.1	+4.8	+0.45	+22	+0.62	+0.62	+0.78	\$220	\$337	
2	RTT23U15	-	-	-	-	-	-	-	-	-	-	-	-	-	-	-	-	-	-	-	-	-	-	-	-	-	-	
3	RTT23U11	+4.5	+2.9	-2.6	+3.3	+4.3	+83	+107	+63	+0.27	+8.9	+30	+3.9	-6.0	+56	+11.9	+1.3	+2.8	-0.3	+3.6	+0.55	+14	+0.74	+0.64	+0.96	\$227	\$356	
4	RTT23U17	+5.0	+4.7	-5.3	+3.3	+52	+94	+122	+91	+0.33	+6.7	+20	+3.1	-5.2	+69	+8.3	+1.5	+2.9	-0.2	+3.6	+0.55	+25	-	-	-	\$238	\$390	
5	RTT23U7	+1.1	-2.2	-2.0	+4.9	+50	+91	+124	+90	+0.32	+7.8	+24	+4.1	-5.4	+61	+9.2	-0.1	+0.5	-0.4	+4.0	+0.57	+18	-	-	-	\$212	\$347	
6	RTT23U8	-	-	-	-	-	-	-	-	-	-	-	-	-	-	-	-	-	-	-	-	-	-	-	-	-	-	
7	RTT23U139	-2.4	+3.4	-4.1	+6.6	+68	+116	+153	+142	+0.48	+10.0	+20	+4.5	-5.1	+87	+12.0	-1.7	-1.9	+0.0	+4.3	+0.69	+30	+0.76	+0.90	+0.84	\$245	\$423	
8	RTT23U36	+5.3	+2.1	-5.6	+3.7	+61	+98	+145	+125	+0.38	+7.8	+25	+3.7	-4.8	+67	+8.6	-2.1	-2.0	+0.0	+4.1	+0.31	+27	+0.62	+0.76	+0.76	\$228	\$396	
9	RTT23U41	+2.4	-3.8	-1.6	+4.9	+56	+96	+128	+113	+0.34	+10.6	+17	+2.6	-2.5	+77	+9.1	-1.2	-0.4	+0.2	+2.7	+0.19	+35	+0.64	+0.82	+1.06	\$190	\$331	
10	RTT23U10	+1.2	-4.6	-3.5	+4.9	+49	+88	+117	+77	+0.44	+8.1	+27	+3.3	-5.1	+50	+7.2	-1.0	-0.6	-0.2	+3.7	+0.37	+17	+0.74	+0.68	+0.90	\$205	\$324	
11	RTT23U14	+0.7	-8.3	-0.7	+4.3	+54	+95	+133	+112	+0.32	+9.9	+26	+2.8	-3.7	+76	+11.0	-2.8	-1.0	+0.5	+2.2	-0.04	+20	+0.40	+0.64	+0.82	\$190	\$326	
12	RTT23U85	-1.2	-2.0	+0.3	+2.3	+52	+96	+121	+110	+0.36	+10.2	+23	+2.1	-5.7	+84	-0.1	+1.1	+2.6	-0.1	+3.2	+0.01	+35	+1.02	+0.92	+1.12	\$205	\$351	
13	RTT23U84	-2.8	-1.6	+1.0	+5.3	+64	+108	+139	+134	+0.27	+6.0	+8	+0.9	-4.3	+93	+6.6	-0.2	+0.8	+0.5	+2.2	+0.13	+25	+1.02	+0.98	+0.78	\$224	\$384	
14	RTT23U89	-3.2	+0.1	-1.1	+5.6	+63	+110	+141	+156	+0.32	+8.7	+13	+2.1	-4.3	+92	+3.4	-0.9	+1.2	+0.5	+1.5	-0.23	+17	+1.06	+0.86	+1.08	\$194	\$369	
15	RTT23U119	-5.8	-3.2	-2.5	+8.0	+53	+96	+119	+134	+0.15	+10.0	+6	+2.7	-2.4	+69	+7.9	-3.5	-2.7	+2.5	-2.6	+0.21	+3	+0.74	+0.74	+1.20	\$127	\$262	
16	RTT23U136	+0.7	+0.9	-4.0	+4.4	+42	+75	+93	+86	+0.30	+6.8	+18	+0.7	-3.6	+53	+6.3	-0.7	-0.2	+1.2	-0.4	-0.30	+17	-	-	-	\$145	\$260	
17	RTT23U132	+0.7	+0.9	-4.0	+4.4	+42	+75	+93	+86	+0.30	+6.8	+18	+0.7	-3.6	+53	+6.3	-0.7	-0.2	+1.2	-0.4	-0.30	+17	-	-	-	\$145	\$260	
18	RTT23U150	+0.7	+0.9	-4.0	+4.4	+42	+75	+93	+86	+0.30	+6.8	+18	+0.7	-3.6	+53	+6.3	-0.7	-0.2	+1.2	-0.4	-0.30	+17	-	-	-	\$145	\$260	
19	RTT23U20	+1.7	+4.2	-5.8	+4.8	+51	+96	+109	+81	+0.23	+6.7	+12	+0.0	-6.5	+71	+11.5	+0.0	+0.9	+1.6	+0.4	+0.02	+30	+0.84	+0.66	+0.92	\$254	\$395	
20	RTT23U123	+1.4	+0.1	-4.9	+4.1	+45	+74	+97	+80	+0.35	+10.0	+10	+1.7	-2.2	+58	+0.3	-1.2	-0.6	+0.1	+1.4	+0.10	+28	+0.58	+0.58	+0.86	\$134	\$240	
22	RTT23U110	+4.1	+5.5	-9.5	+4.2	+54	+96	+127	+137	+0.42	+11.4	+11	+2.3	-2.5	+61	+3.7	+2.5	+4.2	-0.4	+0.7	-0.24	+33	+0.58	+0.60	+0.76	\$160	\$330	
23	RTT23U176	+4.8	-0.9	-2.3	+5.3	+56	+100	+126	+99	+0.24	+9.4	+18	+1.7	-8.1	+77	+9.9	-0.5	-0.5	+0.5	+1.4	+0.71	+20	+0.78	+0.90	+1.16	\$249	\$409	
24	RTT23U217	-20.5	-9.8	-0.6	+9.3	+59	+104	+134	+134	+0.45	+9.1	+9	+3.6	-5.9	+73	+8.5	-1.3	-3.1	+1.6	+0.0	+0.01	+28	+0.46	+0.56	+0.90	\$143	\$254	
25	RTT23U211	-12.8	-11.5	-3.4	+7.3	+54	+102	+124	+100	+0.22	+9.6	+19	+2.9	-5.4	+77	+5.3	-1.6	-2.8	+0.5	+2.7	+0.40	+16	+0.46	+0.86	+0.88	\$175	\$280	
26	RTT23U228	-	-	-	-	-	-	-	-	-	-	-	-	-	-	-	-	-	-	-	-	-	-	-	-	-	-	
27	RTT23U252	-10.4	-0.8	+1.3	+6.4	+50	+90	+109	+115	+0.39	+8.8	+6	+2.5	-5.5	+63	+8.8	-0.7	-0.6	+1.3	+0.1	+0.15	+22	+0.72	+1.00	+0.88	\$158	\$284	
28	RTT23U239	-2.5	-8.0	+0.9	+5.4	+49	+88	+105	+117	+0.38	+8.6	+15	+0.5	-4.6	+69	+0.4	-1.0	-1.1	+0.3	+2.8	+0.26	+30	+0.98	+0.86	+1.18	\$155	\$286	
29	RTT23U230	-3.7	-3.9	-2.7	+6.2	+40	+83	+96	+99	+0.19	+8.2	+8	+2.2	-3.0	+65	+8.1	-0.8	-0.3	+1.6	+0.0	+0.60	+20	+0.92	+0.80	+1.04	\$135	\$252	
30	RTT23U235	-6.5	+2.8	+1.3	+5.3	+47	+83	+105	+83	+0.26	+7.8	+11	+1.6	-1.7	+73	+13.9	-0.3	+0.3	+1.9	-0.5	+0.27	+14	+0.88	+0.74	+1.00	\$166	\$266	
Dir		Dtrs	GL	BW	200W	400W	600W	MCW	MBC	MCH	Milk	SS	DTC	CWT	EMA	Rib	Rump	RBV	IMF	NFI-F	Doc	CS	FA	LA	\$A	\$A-L		
		+2.3	+3.2	-4.6	+3.9	+52	+94	+121	+103	+0.27	+8.3	+17	+2.2	-4.8	+69	+6.6	+0.1	-0.2	+0.4	+2.5	+0.23	+21	+0.84	+0.96	+1.02	+206	+353	

TransTasman Angus Cattle Evaluation

ANGUS REFERENCE SIRES



Alpine Real Deal R163

The best Angus bull we have ever used. We purchased Real Deal for \$90000 at the 2022 Alpine Autumn bull sale after we'd been on the lookout for a big numbered elite sire. He continues to impress us more and more every year. His sons are so easy doing, quiet and have a beautiful skin and hair type. We can honestly say Real Deal is an absolute foot improver. We eagerly await his first daughters to calve down in March.



Texas Earnan L612

We purchased a semen package in this elite sire when our good friends at DSK Angus, NSW purchased him for \$56000 from the Texas sale. His sons have far exceeded our expectations and really are just the type we like: big hipped with muscle and growth. We have found them to be born very easy and get up and grow. We have been impressed by his progeny at DSK and is a bull we will continue to use.



Knowla Monty M186

Monty is a bull we had been intrigued by due to his overall power and dimension. This is our second year of sons in the sale and these bulls could be the best yet.



HF Alcatraz 60F

Harris saw Alcatraz in 2018 as a yearling and was blown away by his overall mass, quality and foot structure. On a trip to Hamilton Farms in Canada this past July it was great to see so many exceptional daughters in production as do we. This is the first set of sons we've had for sale due to us only getting heifers the last few seasons.



Roseleigh Quarterback Q19

We have been so happy with what this bull has done for us since we purchased him back in 2021 at the Roseleigh Angus sale in SA. His daughters are beautiful milky square made cows who have crossed brilliantly with Real Deal. His sons offer added growth and performance.



QUALITY PASTURE FERTILISERS

Boost your pastures

Quality pasture is the most cost-effective way to feed your livestock. We have the product range and knowledge to help.



Make informed decisions with NUlogic

To find out what nutrients your soil needs and to ensure the right fertiliser is used at the right rate, place, and time, we recommend NUlogic Soil and Plant Analysis.

Order today

For the full range of available products please contact your CSBP account manager or sales agent to optimise your fertiliser strategy today.

For better growth.



1 VENTURON *Unity U9^{PV}*

Born: 26/02/2023 | Tattoo: RTT23U9 | HBR
AMFU, CAFU, DDFU, NHFU - BWT, 200WT, Genomics

PURCHASER: _____ \$ _____

	CE-DIR	CE-DTR	GL	BW	200	400	600	MCW	MILK	SS	CWT	EMA	RIB	RUMP	RBY	IMF
EBV	+5.9	+0.4	-2.1	+2.6	+43	+78	+109	+62	+25	+3.7	+52	+12.5	+0.3	+2.7	-0.1	+4.8
ACC	64%	53%	82%	82%	82%	80%	81%	77%	72%	78%	69%	68%	68%	69%	60%	73%
PERC	22	80	85	22	88	88	76	95	7	9	90	5	43	10	75	7

\$ Index Values	
\$A	\$A-L
\$220	\$337

Here come the Real Deals. U9 has impressed us the whole way through. He is the first of 5 flush brothers to sell in the sale and quite possibly the thickest. Check out his data set. You really need to admire this bull for his overall width and thickness all with a 4.8 for imf and an ema in the top 5% of the breed. This bull deserves his spot in the front paddock. Heifer bull option.

Sire:

H P C A INTENSITY USA17366506[#]
RENNYLEA N542 NORN542^{PV}
RENNYLEA EISA ERICA G366 NORG366^{SV}
ALPINE REAL DEAL R163 CGKR163^{PV}
TE MANIA LONGSHOT L107 VTML107^{SV}
ALPINE LONGSHOT P354 CGKP354^{PV}
ALPINE M242 CGKM242^{PV}

Dam:

S A V FRONT RUNNER 0713 USA0713[#]
DIAMOND TREE FRONT RUNNER B103 WKGB103^{SV}
DIAMOND TREE WALK ON X33 WKGX33[#]
DIAMOND TREE FRONT RUNNER M256 IHSM256^{SV}
DIAMOND TREE RIGHT TIME D46 WKGD46^{PV}
DIAMOND TREE RIGHT TIME G211 WKG211[#]
DIAMOND TREE FRONTIER C86 WKG86[#]



2 VENTURON *Uncle Gary U15^{PV}*

Born: 03/03/2023 | Tattoo: RTT23U15 | HBR

PURCHASER: _____ \$ _____

	CE-DIR	CE-DTR	GL	BW	200	400	600	MCW	MILK	SS	CWT	EMA	RIB	RUMP	RBY	IMF
EBV	-	-	-	-	-	-	-	-	-	-	-	-	-	-	-	-
ACC	-	-	-	-	-	-	-	-	-	-	-	-	-	-	-	-
PERC	-	-	-	-	-	-	-	-	-	-	-	-	-	-	-	-

\$ Index Values	
\$A	\$A-L
-	-

Sires presence plus. We just love everything about this bull. His slick hair and soft skin to his length of body and presence. His dam is a female we purchased out of the 2022 Monterey female sale after receiving a call from Gary telling us there was a cow we would just love and have to own. This bull's Et sisters are show-stoppers, and we can't wait for them to calve down. EBVs will be available prior to sale.

Sire:

H P C A INTENSITY USA17366506[#]
RENNYLEA N542 NORN542^{PV}
RENNYLEA EISA ERICA G366 NORG366^{SV}
ALPINE REAL DEAL R163 CGKR163^{PV}
TE MANIA LONGSHOT L107 VTML107^{SV}
ALPINE LONGSHOT P354 CGKP354^{PV}
ALPINE M242 CGKM242^{PV}

Dam:

WALLAROEY EXPERT X255 NEDX255^{SV}
MONTEREY GOTHIC G153 WGJG153^{SV}
MONTEREY SERENE V19 WGJV19[#]
MONTEREY VANILLA L69 WGJL69[#]
THE GRANGE A150 WFOA150^{SV}
MONTEREY VANILLA H166 WGJH166[#]
MONTEREY VANILLA D160 WGJD160[#]



3 VENTURON *U1r Un Real U11*^{PV}

Born: 25/02/2023 | Tattoo: RTT23U11 | HBR
AMFU, CAFU, DDFU, NHFU - 200WT, Genomics

PURCHASER: _____ \$ _____

	CE-DIR	CE-DTR	GL	BW	200	400	600	MCW	MILK	SS	CWT	EMA	RIB	RUMP	RBY	IMF
EBV	+4.5	+2.9	-2.6	+3.3	+43	+83	+107	+63	+30	+3.9	+56	+11.9	+1.3	+2.8	-0.3	+3.6
ACC	66%	54%	82%	82%	83%	81%	81%	78%	73%	79%	70%	70%	69%	70%	61%	74%
PERC	35	58	79	35	87	79	79	95	1	7	84	6	22	9	83	23

\$ Index Values	
\$A	\$A-L
\$227	\$356

Very similar in design to U9. A long made bull with exceptional feet and body mass. He has such a great head and front end set up this bull and we know he's going to sire some top end females. Stud sire potential.

Sire:

H P C A INTENSITY USA17366506[#]
RENNYLEA N542 NORN542^{PV}
RENNYLEA EISA ERICA G366 NORG366^{SV}
ALPINE REAL DEAL R163 CGKR163^{PV}
TE MANIA LONGSHOT L107 VTML107^{SV}
ALPINE LONGSHOT P354 CGKP354^{PV}
ALPINE M242 CGKM242^{PV}

Dam:

S A V FRONT RUNNER 0713 USA0713[#]
DIAMOND TREE FRONT RUNNER B103 WKGB103^{SV}
DIAMOND TREE WALK ON X33 WKGX33[#]
DIAMOND TREE FRONT RUNNER M256 IHSM256^{SV}
DIAMOND TREE RIGHT TIME D46 WKGD46^{PV}
DIAMOND TREE RIGHT TIME G211 WKG211[#]
DIAMOND TREE FRONTIER C86 WKG86[#]



4 VENTURON *Uptown U17*^{PV}

Born: 07/03/2023 | Tattoo: RTT23U17 | HBR
AMFU, CAFU, DDFU, NHFU - BWT, 200WT

PURCHASER: _____ \$ _____

	CE-DIR	CE-DTR	GL	BW	200	400	600	MCW	MILK	SS	CWT	EMA	RIB	RUMP	RBY	IMF
EBV	+5.0	+4.7	-5.3	+3.3	+52	+94	+122	+91	+20	+3.1	+69	+8.3	+1.5	+2.9	-0.2	+3.6
ACC	60%	50%	73%	73%	74%	72%	72%	70%	64%	69%	63%	64%	64%	65%	58%	67%
PERC	30	38	38	35	48	48	47	69	29	19	51	29	19	9	80	23

\$ Index Values	
\$A	\$A-L
\$238	\$390

Andrew's favourite Angus bull of the draft. This bull offers added frame and performance all whilst having so much maternal power backing him. His dam is one of our favourite females and has another great calf weaned this year.

Sire:

H P C A INTENSITY USA17366506[#]
RENNYLEA N542 NORN542^{PV}
RENNYLEA EISA ERICA G366 NORG366^{SV}
ALPINE REAL DEAL R163 CGKR163^{PV}
TE MANIA LONGSHOT L107 VTML107^{SV}
ALPINE LONGSHOT P354 CGKP354^{PV}
ALPINE M242 CGKM242^{PV}

Dam:

PATHFINDER GENESIS G357 SMPG357^{PV}
PATHFINDER COMPLETE K22 SMPK22^{SV}
PATHFINDER EQUATOR H756 SMPH756[#]
MONTEREY HEARTACHE Q145 WGJQ145^{SV}
PLATTEMERE WEIGH UP K360 USA16692552[#]
MONTEREY HEARTACHE N95 WGIN95[#]
MONTEREY HEARTACHE L42 WGJL42[#]

BREEDING SERVICES

Nutrien
Ag Solutions®

Supplying Breeding Services to WA Commercial & Stud Cattle Producers



Scan to learn more.

NutrienAgSolutions.com.au/Livestock/Stud-Stock-Breeding

Contact:

Brad Demarti

0407 462 688

brad.demarti@nutrien.com.au

Steve Mountford

0418 921 753

steve.mountford@nutrien.com.au

Mitch Parker

0416 192 101

mitch.parker@nutrien.com.au

- ✓ ARTIFICIAL INSEMINATION (AI)
- ✓ BREEDING PROGRAMS
- ✓ BULL SEMEN QUALITY TESTING & COLLECTION
- ✓ SEMEN SALES - DAIRY & BEEF
- ✓ FREEZE BRANDING
- ✓ BVDV TESTING
- ✓ LIQUID NITROGEN
- ✓ GENOMIC TESTING
- ✓ SEMEN & EMBRYO STORAGE

Genetic improvement in your breeding program is only a call away.

Nutrien
Ag Solutions®

GOING FURTHER®

ANGUS DAMS



Cherylton Rado P205 - Dam of Lot 11



Coonamble H251 - Dam of Lot 25



**Monterey Stella F65 - Dam of
Lot 16, 17 & 18**



**Monterey Vanilla L69 - Dam of
Lot 2, 6 & 15**



Venturon Diana S134 - Dam of Lot 23



**Venturon Rosebud Lass Q13 - Dam of
Lot 12, 13 & 14**



5 VENTURON *Ultra Deal U7*^{PV}

Born: 26/02/2023 | Tattoo: RTT23U7 | HBR
AMFU, CAFU, DDFU, NHFU - BWT, 200WT(X2)

PURCHASER: _____ \$ _____

	CE-DIR	CE-DTR	GL	BW	200	400	600	MCW	MILK	SS	CWT	EMA	RIB	RUMP	RBY	IMF
EBV	+1.1	-2.2	-2.0	+4.9	+50	+91	+124	+90	+24	+4.1	+61	+9.2	-0.1	+0.5	-0.4	+4.0
ACC	60%	49%	73%	73%	74%	72%	72%	70%	64%	69%	63%	63%	63%	64%	57%	67%
PERC	66	92	85	72	60	60	42	71	10	5	72	21	53	37	87	16

\$ Index Values	
\$A	\$A-L
\$212	\$347

A smooth made big time performance bull. This bull offers added growth figures whilst maintaining impressive carcase data. This flush has been one of our best to date.

Sire:

H P C A INTENSITY USA17366506[#]
RENNYLEA N542 NORN542^{PV}
RENNYLEA EISA ERICA G366 NORG366^{SV}
ALPINE REAL DEAL R163 CGKR163^{PV}
TE MANIA LONGSHOT L107 VTML107^{SV}
ALPINE LONGSHOT P354 CGKP354^{PV}
ALPINE M242 CGKM242^{PV}

Dam:

S A V FRONT RUNNER 0713 USA0713[#]
DIAMOND TREE FRONT RUNNER B103 WKGB103^{SV}
DIAMOND TREE WALK ON X33 WKGX33[#]
DIAMOND TREE FRONT RUNNER M256 IHSM256^{SV}
DIAMOND TREE RIGHT TIME D46 WKGD46^{PV}
DIAMOND TREE RIGHT TIME G211 WKG211[#]
DIAMOND TREE FRONTIER C86 WKG86[#]



6 VENTURON *Ultra Deal U8*^{PV}

Born: 26/02/2023 | Tattoo: RTT23U8 | HBR

PURCHASER: _____ \$ _____

	CE-DIR	CE-DTR	GL	BW	200	400	600	MCW	MILK	SS	CWT	EMA	RIB	RUMP	RBY	IMF
EBV	-	-	-	-	-	-	-	-	-	-	-	-	-	-	-	-
ACC	-	-	-	-	-	-	-	-	-	-	-	-	-	-	-	-
PERC	-	-	-	-	-	-	-	-	-	-	-	-	-	-	-	-

\$ Index Values	
\$A	\$A-L
-	-

Et brother to lot 2. A bull who has so much elevation through his front end just like his sire. We appreciate this bull for his extra middle and smoothness of shoulder whilst still maintaining power. EBVs will be available prior to sale.

Sire:

H P C A INTENSITY USA17366506[#]
RENNYLEA N542 NORN542^{PV}
RENNYLEA EISA ERICA G366 NORG366^{SV}
ALPINE REAL DEAL R163 CGKR163^{PV}
TE MANIA LONGSHOT L107 VTML107^{SV}
ALPINE LONGSHOT P354 CGKP354^{PV}
ALPINE M242 CGKM242^{PV}

Dam:

WALLAROEY EXPERT X255 NEDX255^{SV}
MONTEREY GOTHIC G153 WGJG153^{SV}
MONTEREY SERENE V19 WGJV19[#]
MONTEREY VANILLA L69 WGJL69[#]
THE GRANGE A150 WFOA150^{SV}
MONTEREY VANILLA H166 WGJH166[#]
MONTEREY VANILLA D160 WGJD160[#]



7 VENTURON U139^{SV}

Born: 26/06/2023 | Tattoo: RTT23U139 | HBR
AMFU, CAFU, DDFU, NHFU - GL, Genomics

PURCHASER: _____ \$ _____

	CE-DIR	CE-DTR	GL	BW	200	400	600	MCW	MILK	SS	CWT	EMA	RIB	RUMP	RBY	IMF
EBV	-2.4	+3.4	-4.1	+6.6	+68	+116	+153	+142	+20	+4.5	+87	+12.0	-1.7	-1.9	+0.0	+4.3
ACC	63%	52%	81%	81%	82%	80%	81%	77%	72%	78%	67%	67%	67%	68%	59%	72%
PERC	86	53	57	94	4	5	5	6	29	3	9	6	85	78	70	12

\$ Index Values	
\$A	\$A-L
\$245	\$423

One of Harris's favourite bulls in the sale. He's the youngest Real Deal son in this group but you wouldn't think it. He has been picked by some very astute breeders this past year in the bull paddock. He's got his sire's beautiful front end and carries so much length and rib. A big-time growth figured bull ranking in the top 4-6% of the breed for all traits.

Sire:

H P C A INTENSITY USA17366506[#]
RENNYLEA N542 NORN542^{PV}
RENNYLEA EISA ERICA G366 NORG366^{SV}
ALPINE REAL DEAL R163 CGKR163^{PV}
TE MANIA LONGSHOT L107 VTML107^{SV}
ALPINE LONGSHOT P354 CGKP354^{PV}
ALPINE M242 CGKM242^{PV}

Dam:

4M ELEMENT 405 USA17748846^{SV}
VENTURON QUALITY CONTROL Q9 RTTQ9^{PV}
DIAMOND TREE WEIGH UP M29 IHSM29^{SV}
VENTURON REBECCA S112 RTT21S112[#]
GRANITE RIDGE MAXIMUS M34 SJKM34^{SV}
VENTURON REBECCA Q16 RTTQ16[#]
DIAMOND TREE DOUBLE VISION M131 IHSM131[#]



8 VENTURON Up The River U36^{PV}

Born: 18/03/2023 | Tattoo: RTT23U36 | HBR
AMFU, CAFU, DDFU, NHFU - GL, BWT, 200WT, Genomics

PURCHASER: _____ \$ _____

	CE-DIR	CE-DTR	GL	BW	200	400	600	MCW	MILK	SS	CWT	EMA	RIB	RUMP	RBY	IMF
EBV	+5.3	+2.1	-5.6	+3.7	+61	+98	+145	+125	+25	+3.7	+67	+8.6	-2.1	-2.0	+0.0	+4.1
ACC	67%	57%	83%	82%	83%	81%	82%	78%	74%	80%	71%	71%	70%	71%	62%	75%
PERC	28	66	33	45	14	36	9	18	7	9	56	26	90	79	70	15

\$ Index Values	
\$A	\$A-L
\$228	\$396

This bull has really come through and commanded our attention since the bulls have been on feed. We appreciate this bull's added shape and great feet and legs on him. His dam has reared us some great sons, including our 2023 sale topper.

Sire:

H P C A INTENSITY USA17366506[#]
RENNYLEA N542 NORN542^{PV}
RENNYLEA EISA ERICA G366 NORG366^{SV}
ALPINE REAL DEAL R163 CGKR163^{PV}
TE MANIA LONGSHOT L107 VTML107^{SV}
ALPINE LONGSHOT P354 CGKP354^{PV}
ALPINE M242 CGKM242^{PV}

Dam:

G A R PROPHET USA16295688^{SV}
BALDRIDGE BEAST MODE B074 USA17960722^{PV}
BALDRIDGE ISABEL Y69 USA17149410[#]
VENTURON QUEEN OF HEARTS Q4 RTTQ4^{PV}
A A R TEN X 7008 S A USA15719841^{SV}
DIAMOND TREE TEN X M64 IHSM64^{SV}
DIAMOND TREE CC & 7 H88 WKGH88[#]



9 VENTURON *Umpire U41*^{PV}

Born: 19/03/2023 | Tattoo: RTT23U41 | HBR
AMFU, CAFU, DDFU, NHFU - GL, BWT, 200WT, Genomics

PURCHASER: _____ \$ _____

	CE-DIR	CE-DTR	GL	BW	200	400	600	MCW	MILK	SS	CWT	EMA	RIB	RUMP	RBY	IMF
EBV	+2.4	-3.8	-1.6	+4.9	+56	+96	+128	+113	+17	+2.6	+77	+9.1	-1.2	-0.4	+0.2	+2.7
ACC	64%	53%	82%	82%	82%	81%	81%	77%	72%	79%	69%	69%	68%	69%	60%	73%
PERC	55	95	89	72	31	42	34	34	52	33	28	21	77	53	59	42

\$ Index Values	
\$A	\$A-L
\$190	\$331

Sire:

H P C A INTENSITY USA17366506[#]
RENNYLEA N542 NORN542^{PV}
RENNYLEA EISA ERICA G366 NORG366^{SV}
ALPINE REAL DEAL R163 CGKR163^{PV}
TE MANIA LONGSHOT L107 VTML107^{SV}
ALPINE LONGSHOT P354 CGKP354^{PV}
ALPINE M242 CGKM242^{PV}

Dam:

BRAVEHEART OF STERN NZE1217000784^{SV}
GRANITE RIDGE MAXIMUS M34 SJKM34^{SV}
GRANITE RIDGE BONNEY K232 SJKK232[#]
VENTURON STELLA Q25 RTTQ25^{SV}
CARENDA STOCKMAN D34 WJKD34^{SV}
MONTEREY STELLA F65 WGJF65[#]
MONTEREY STELLA C109 WGJC109[#]



10 VENTURON *Uganda U10*^{PV}

Born: 23/02/2023 | Tattoo: RTT23U10 | HBR
AMFU, CAFU, DDFU, NHFU - BWT, 200WT, Genomics

PURCHASER: _____ \$ _____

	CE-DIR	CE-DTR	GL	BW	200	400	600	MCW	MILK	SS	CWT	EMA	RIB	RUMP	RBY	IMF
EBV	+1.2	-4.6	-3.5	+4.9	+49	+88	+117	+77	+27	+3.3	+50	+7.2	-1.0	-0.6	-0.2	+3.7
ACC	65%	54%	83%	82%	83%	81%	81%	78%	74%	79%	70%	70%	69%	70%	61%	74%
PERC	65	97	67	72	63	67	60	86	4	15	93	41	73	57	80	21

\$ Index Values	
\$A	\$A-L
\$205	\$324

Sire:

H P C A INTENSITY USA17366506[#]
RENNYLEA N542 NORN542^{PV}
RENNYLEA EISA ERICA G366 NORG366^{SV}
ALPINE REAL DEAL R163 CGKR163^{PV}
TE MANIA LONGSHOT L107 VTML107^{SV}
ALPINE LONGSHOT P354 CGKP354^{PV}
ALPINE M242 CGKM242^{PV}

Dam:

S A V FRONT RUNNER 0713 USA0713[#]
DIAMOND TREE FRONT RUNNER B103 WKGB103^{SV}
DIAMOND TREE WALK ON X33 WKGX33[#]
DIAMOND TREE FRONT RUNNER M256 IHSM256^{SV}
DIAMOND TREE RIGHT TIME D46 WKGD46^{PV}
DIAMOND TREE RIGHT TIME G211 WKGG211[#]
DIAMOND TREE FRONTIER C86 WKGC86[#]

A bigger framed Real Deal who we feel will make some great daughters. His dam is one of our best Maximus daughters from the Stella line.

The last of the M256 Et bred sons. This flush has been so impressive the whole way through and demonstrates what we are chasing in our blacks. Another heifer mating option whose calves will perform and meet markets.



U14 is an ET brother to U6 who sold as the feature bull in our 2024 sale. His dam is one of our best cows on the farm. If you missed out on U6, here's the chance to own his brother.

11 VENTURON *Unreal Deal U14*^{PV}

Sire:

Born: 27/02/2023 | Tattoo: RTT23U14 | HBR
AMFU, CAFU, DDFU, NHFU - Genomics

Dam:

PURCHASER: _____ \$

	CE-DIR	CE-DTR	GL	BW	200	400	600	MCW	MILK	SS	CWT	EMA	RIB	RUMP	RBY	IMF
EBV	+0.7	-8.3	-0.7	+4.3	+54	+95	+133	+112	+26	+2.8	+76	+11.0	-2.8	-1.0	+0.5	+2.2
ACC	66%	55%	83%	82%	83%	81%	81%	78%	74%	79%	70%	70%	69%	71%	61%	74%
PERC	69	99	94	59	41	46	26	35	5	27	31	10	95	64	40	54

H P C A INTENSITY USA17366506[#]
RENNYLEA N542 NORN542^{PV}
RENNYLEA EISA ERICA G366 NORG366^{SV}
ALPINE REAL DEAL R163 CGKR163^{PV}
TE MANIA LONGSHOT L107 VTML107^{SV}
ALPINE LONGSHOT P354 CGKP354^{PV}
ALPINE M242 CGKM242^{PV}

COONAMBLE HECTOR H249 WDCH249^{SV}
CHERYLTON HECTOR M54 WLHM54^{SV}
MILLAH MURRAH FLOWER E172 NMME172^{SV}
CHERYLTON RADO P205 WLHP205^{PV}
THOMAS UP RIVER 1614 USA17091363^{PV}
MILLAH MURRAH RADO K255 NMMK255^{PV}
MILLAH MURRAH RADO G265 NMMG265^{PV}

\$ Index Values

\$A	\$A-L
\$190	\$326



What a tank. U85 has been the heaviest bull in the contemporary all year and displays so much muscle and red meat. He's the first of a set of ET brothers in this year's sale and it's a flush we will be doing again.

12 VENTURON *U85*^{PV}

Sire:

Born: 29/03/2023 | Tattoo: RTT23U85 | HBR
AMFU, CAFU, DDFU, NHFU - Genomics

Dam:

PURCHASER: _____ \$

	CE-DIR	CE-DTR	GL	BW	200	400	600	MCW	MILK	SS	CWT	EMA	RIB	RUMP	RBY	IMF
EBV	-1.2	-2.0	+0.3	+2.3	+52	+96	+121	+110	+23	+2.1	+84	-0.1	+1.1	+2.6	-0.1	+3.2
ACC	62%	54%	82%	81%	82%	80%	81%	77%	74%	79%	70%	70%	69%	70%	62%	74%
PERC	80	91	98	17	48	42	49	39	12	52	13	98	26	11	75	31

TUWHARETOA REGENT D145 BNAD145^{PV}
DUNOON HIGHPOINT H744 BHRH744^{SV}
DUNOON ANGUISH D202 BHRD202[#]
KNOWLA MONTY M186 BLAM186^{PV}
WATTLETOP SITZ 458N E111 NWPE111^{SV}
KNOWLA PANDA H119 BLAH119^{SV}
KNOWLA PANDA A49 BLAA49[#]

REMITALL NIGHTHAWK 37N CAN1171920[#]
REMITALL H RACHIS 21R CAN1274555[#]
HENDERSON MISSIE 32'02 CAN1122972[#]
VENTURON RR ROSEBUD LASS Q13 RTTQ13^{PV}
REMITALL TOONIE 541T CAN1398731[#]
LLB ROSEBUD LASS 87W CAN1520329[#]
MOUNTAIN ASH ROSEBUD LASS 5T CAN1382417[#]

\$ Index Values

\$A	\$A-L
\$205	\$351



13 VENTURON U84^{PV}

Born: 07/04/2023 | Tattoo: RTT23U84 | HBR
AMFU, CAFU, DDFU, NHFU - Genomics

PURCHASER: _____ \$

	CE-DIR	CE-DTR	GL	BW	200	400	600	MCW	MILK	SS	CWT	EMA	RIB	RUMP	RBY	IMF
EBV	-2.8	-1.6	+1.0	+5.3	+64	+108	+139	+134	+8	+0.9	+93	+6.6	-0.2	+0.8	+0.5	+2.2
ACC	64%	55%	82%	81%	82%	80%	81%	78%	73%	78%	72%	71%	71%	72%	63%	76%
PERC	87	90	99	79	8	15	16	11	98	89	5	48	55	32	40	54

\$ Index Values	
\$A	\$A-L
\$224	\$384

A Knowla Packer son who is a long made thick bull. He offers added growth with an outcross pedigree. Our Packer calves have been impressive, and we feel U84 is the best yet.

Sire:

MILWILLAH GATSBY G279 NJWG279^{PV}
BOWMONT KING K306 SRKK306^{PV}
LANDFALL FEARLESS D58 TFAD58^{SV}
KNOWLA PACKER P130 BLAP130^{PV}
EF COMPLEMENT 8088 USA16198796^{PV}
KNOWLA PANDA K113 BLAK113^{SV}
KNOWLA PANDA Y29 BLAY29[#]

Dam:

REMITALL NIGHTHAWK 37N CAN1171920[#]
REMITALL H RACHIS 21R CAN1274555[#]
HENDERSON MISSIE 32'02 CAN1122972[#]
VENTURON RR ROSEBUD LASS Q13 RTTQ13^{PV}
REMITALL TOONIE 541T CAN1398731[#]
LLB ROSEBUD LASS 87W CAN1520329[#]
MOUNTAIN ASH ROSEBUD LASS ST CAN1382417[#]



14 VENTURON Up For It U89^{PV}

Born: 07/04/2023 | Tattoo: RTT23U89 | HBR
AMFU, CAFU, DDFU, NHFU - 200WT, Genomics

PURCHASER: _____ \$

	CE-DIR	CE-DTR	GL	BW	200	400	600	MCW	MILK	SS	CWT	EMA	RIB	RUMP	RBY	IMF
EBV	-3.2	+0.1	-1.1	+5.6	+63	+110	+141	+156	+13	+2.1	+92	+3.4	-0.9	+1.2	+0.5	+1.5
ACC	62%	54%	82%	81%	82%	80%	81%	77%	73%	78%	69%	69%	69%	70%	61%	73%
PERC	89	81	92	84	9	12	13	3	79	52	5	84	71	26	40	72

\$ Index Values	
\$A	\$A-L
\$194	\$369

The last of the sons of Q13 in the sale. Q13 was Supreme Angus exhibit at Perth 2021 and has developed into a beautiful square made cow. The cross of Monty and Rachis seems to be an impressive one.

Sire:

TUWHARETOA REGENT D145 BNAD145^{PV}
DUNOON HIGHPOINT H744 BHRH744^{SV}
DUNOON ANGUISH D202 BHRD202[#]
KNOWLA MONTY M186 BLAM186^{PV}
WATTLETOP SITZ 458N E111 NWPE111^{SV}
KNOWLA PANDA H119 BLAH119^{SV}
KNOWLA PANDA A49 BLAA49[#]

Dam:

REMITALL NIGHTHAWK 37N CAN1171920[#]
REMITALL H RACHIS 21R CAN1274555[#]
HENDERSON MISSIE 32'02 CAN1122972[#]
VENTURON RR ROSEBUD LASS Q13 RTTQ13^{PV}
REMITALL TOONIE 541T CAN1398731[#]
LLB ROSEBUD LASS 87W CAN1520329[#]
MOUNTAIN ASH ROSEBUD LASS ST CAN1382417[#]



15 VENTURON *Unison U119^{SV}*

Born: 29/05/2023 | Tattoo: RTT23U119 | HBR
AMFU, CAFU, DDFU, NHFU - Genomics

PURCHASER: _____ \$ _____

	CE-DIR	CE-DTR	GL	BW	200	400	600	MCW	MILK	SS	CWT	EMA	RIB	RUMP	RBY	IMF
EBV	-5.8	-3.2	-2.5	+8.0	+53	+96	+119	+134	+6	+2.7	+69	+79	-3.5	-2.7	+2.5	-2.6
ACC	62%	51%	81%	81%	81%	79%	80%	76%	72%	77%	68%	67%	67%	68%	58%	72%
PERC	95	94	80	99	46	42	54	11	99	30	51	33	98	87	1	99

\$ Index Values	
\$A	\$A-L
\$127	\$262

If you're after muscle then here he is. The natural calf of L69, making him a maternal brother to Lot 2. A top end commercial sire.

Sire:

SITZ UPWARD 307R USA14963730^{SV}
KOUPLS B&B IDENTITY USA16710463^{SV}
B&B ERICA 605 USA15462235[#]
ROSELEIGH QUARTERBACK Q19 SCRQ19^{PV}
KAROO D98 DULCIFY G149 NENG149^{SV}
ROSELEIGH SARAH L62 SCRL62^{SV}
ROSELEIGH SARAH D29 SCRD29[#]

Dam:

WALLAROY EXPERT X255 NEDX255^{SV}
MONTEREY GOTHIC G153 WGJG153^{SV}
MONTEREY SERENE V19 WGJV19[#]
MONTEREY VANILLA L69 WGJL69[#]
THE GRANGE A150 WFOA150^{SV}
MONTEREY VANILLA H166 WGJH166[#]
MONTEREY VANILLA D160 WGJD160[#]



16 VENTURON *U136^{PV}*

Born: 24/06/2023 | Tattoo: RTT23U136 | HBR
AMFU, CAFU, DDFU, NHFU

PURCHASER: _____ \$ _____

	CE-DIR	CE-DTR	GL	BW	200	400	600	MCW	MILK	SS	CWT	EMA	RIB	RUMP	RBY	IMF
EBV	+0.7	+0.9	-4.0	+4.4	+42	+75	+93	+86	+18	+0.7	+53	+6.3	-0.7	-0.2	+1.2	-0.4
ACC	60%	48%	73%	74%	75%	73%	73%	71%	65%	71%	64%	63%	64%	64%	57%	67%
PERC	69	76	59	61	89	93	94	76	47	92	88	52	67	49	10	98

\$ Index Values	
\$A	\$A-L
\$145	\$260

The first of 3 Et brothers. A really quiet bull who we know will develop into an impressive sire. We love this bull's extension of front and added hind quarter.

Sire:

AVF BREAKOUT 5409 USA16493710[#]
MAY-WAY BREAKOUT 1310 CAN1838287[#]
MAY-WAY LADY BANDO 086 USA16926358[#]
HF ALCATRAZ 60F CAN2043806^{PV}
HF TIGER 5T CAN1402252[#]
HF MAYFLOWER 191Z CAN1683163^{PV}
HF MAYFLOWER 78P CAN1214602[#]

Dam:

TC STOCKMAN 2164 USA2164[#]
CARENDA STOCKMAN D34 WJKD34^{SV}
CARENDA VIXON Z2 WJKZ2[#]
MONTEREY STELLA F65 WGJF65[#]
LAWSON'S NEW DESIGN 1407 Y1539 VLYY1539^{SV}
MONTEREY STELLA C109 WGJC109[#]
MONTEREY STELLA W67 WGJW67[#]



A bull who will suit those breeders chasing early finishing heavy weaners. Check out his muscle and width.

17 VENTURON U132[#]

Sire:

Born: 24/06/2023 | Tattoo: RTT23U132 | HBR
AMFU, CAFU, DDFU, NHFU

AVF BREAKOUT 5409 USA16493710[#]
MAY-WAY BREAKOUT 1310 CAN1838287[#]
MAY-WAY LADY BANDO 086 USA16926358[#]
HF ALCATRAZ 60F CAN2043806^{PV}
HF TIGER 5T CAN1402252[#]
HF MAYFLOWER 191Z CAN1683163^{PV}
HF MAYFLOWER 78P CAN1214602[#]

Dam:

TC STOCKMAN 2164 USA2164[#]
CARENDA STOCKMAN D34 WJKD34^{SV}
CARENDA VIXON Z2 WJKZ2[#]
MONTEREY STELLA F65 WGJF65[#]
LAWSON'S NEW DESIGN 1407 Y1539 VLYY1539^{SV}
MONTEREY STELLA C109 WGJC109[#]
MONTEREY STELLA W67 WGJW67[#]

PURCHASER: _____ \$ _____

	CE-DIR	CE-DTR	GL	BW	200	400	600	MCW	MILK	SS	CWT	EMA	RIB	RUMP	RBY	IMF
EBV	+0.7	+0.9	-4.0	+4.4	+42	+75	+93	+86	+18	+0.7	+53	+6.3	-0.7	-0.2	+1.2	-0.4
ACC	60%	48%	73%	74%	75%	73%	73%	71%	65%	71%	64%	63%	64%	64%	57%	67%
PERC	69	76	59	61	89	93	94	76	47	92	88	52	67	49	10	98

\$ Index Values	
\$A	\$A-L
\$145	\$260



The last chance to secure a bull from this flush. Old Stella F65 has been one of the best building blocks in our Angus program. Her daughters never miss and she has a great number of sons around the state working well.

18 VENTURON U150^{PV}

Sire:

Born: 25/06/2023 | Tattoo: RTT23U150 | HBR
AMFU, CAFU, DDFU, NHFU

AVF BREAKOUT 5409 USA16493710[#]
MAY-WAY BREAKOUT 1310 CAN1838287[#]
MAY-WAY LADY BANDO 086 USA16926358[#]
HF ALCATRAZ 60F CAN2043806^{PV}
HF TIGER 5T CAN1402252[#]
HF MAYFLOWER 191Z CAN1683163^{PV}
HF MAYFLOWER 78P CAN1214602[#]

Dam:

TC STOCKMAN 2164 USA2164[#]
CARENDA STOCKMAN D34 WJKD34^{SV}
CARENDA VIXON Z2 WJKZ2[#]
MONTEREY STELLA F65 WGJF65[#]
LAWSON'S NEW DESIGN 1407 Y1539 VLYY1539^{SV}
MONTEREY STELLA C109 WGJC109[#]
MONTEREY STELLA W67 WGJW67[#]

PURCHASER: _____ \$ _____

	CE-DIR	CE-DTR	GL	BW	200	400	600	MCW	MILK	SS	CWT	EMA	RIB	RUMP	RBY	IMF
EBV	+0.7	+0.9	-4.0	+4.4	+42	+75	+93	+86	+18	+0.7	+53	+6.3	-0.7	-0.2	+1.2	-0.4
ACC	60%	48%	73%	74%	75%	73%	73%	71%	65%	71%	64%	63%	64%	64%	57%	67%
PERC	69	76	59	61	89	93	94	76	47	92	88	52	67	49	10	98

\$ Index Values	
\$A	\$A-L
\$145	\$260



Elders

ELDERS STUD STOCK: WHERE QUALITY BREEDS SUCCESS

Nathan King 0488 582 455

Lauren Rayner 0447 900 161

Michael Carroll 0427 975 620

South West Livestock Team

Deane Allen	0427 421 306
Jacques Martinson	0428 424 116
Wade Krawczyk	0428 940 379
Brad McDonnell	0455 442 702
Alex Roberts	0427 861 164
Pearce Watling	0437 844 528
Brendan Millar	0439 482 817
Peter Forrest	0429 200 004

Geoff Shipp	0428 178 177
Cameron Harris	0429 680 334
Craig Martin	0429 631 053
Brendon Mead	0428 611 515
Terry Tarbotton	0428 932 703
Alex Tunstill	0427 093 655
Ben McColm	0487 181 769



19 VENTURON *Upstream U20*^{SV}

Born: 08/03/2023 | Tattoo: RTT23U20 | HBR
AMFU, CAFU, DDFU, NHFU - GL, BWT, 200WT, Genomics

Sire:

Thick as a brick. A super stout son of Three Rivers. This bull has an ample amount of muscle and thickness. His dam has had several top sale bulls.

CTS REMEDY 1T01 USA17331233#
ELLINGSON HOMESTEAD 6030 USA18543019#
EA ERICA 1082 USA17032266#
ELLINGSON THREE RIVERS 8062 USA19203618^{PV}
ELLINGSON CHAPS 4095 USA17932714#
EA EMBLYNETTE 6279 USA18543060^{PV}
EA EMBLYNETTE 2159 USA17339046#

BRAVEHEART OF STERN NZE1217000784^{SV}
GRANITE RIDGE MAXIMUS M34 SJKM34^{SV}
GRANITE RIDGE BONNEY K232 SJKK232#
VENTURON LASS R9 RTT9#
DIAMOND TREE FRONT RUNNER B103 WKGB103^{SV}
DIAMOND TREE FRONT RUNNER M224 IHSM224#
DIAMOND TREE RIGHT TIME G224 WKGG224#

Dam:

PURCHASER: _____ \$ _____

	CE-DIR	CE-DTR	GL	BW	200	400	600	MCW	MILK	SS	CWT	EMA	RIB	RUMP	RBY	IMF
EBV	+1.7	+4.2	-5.8	+4.8	+51	+96	+109	+81	+12	+0.0	+71	+11.5	+0.0	+0.9	+1.6	+0.4
ACC	63%	51%	82%	82%	82%	81%	81%	76%	71%	79%	68%	68%	68%	68%	60%	72%
PERC	61	43	30	70	53	42	75	82	84	98	45	8	50	30	3	92

\$ Index Values	
\$A	\$A-L
\$254	\$395



Picture of sire - Arkle S287

20 VENTURON *Uplift U123*^{SV}

Born: 01/06/2023 | Tattoo: RTT23U123 | HBR
AMFU, CAFU, DDFU, NHFU - BWT, Genomics

Sire:

A moderate son of a bull who sold as a feature lot in our 2023 sale. This bull is a sleep easy at night heifer mating option. Added muscle and carcass shape.

ARDROSSAN EQUATOR A241 NAQA241^{PV}
COONAMBLE L56 WDCL56^{SV}
COONAMBLE J26 WDCJ26^{SV}
ARKLE PARATROOPER S287 ARK21S287^{SV}
CHERYLTON HECTOR M54 WLHM54^{SV}
CHERYLTON RADO P205 WLHP205^{PV}
MILLAH MURRAH RADO K255 NMMK255^{PV}

BRAVEHEART OF STERN NZE1217000784^{SV}
GRANITE RIDGE MAXIMUS M34 SJKM34^{SV}
GRANITE RIDGE BONNEY K232 SJKK232#
VENTURON STARBURST S74 RTT21S74#
DIAMOND TREE FRONT RUNNER B103 WKGB103^{SV}
DIAMOND TREE FRONT RUNNER M256 IHSM256^{SV}
DIAMOND TREE RIGHT TIME G211 WKGG211#

Dam:

PURCHASER: _____ \$ _____

	CE-DIR	CE-DTR	GL	BW	200	400	600	MCW	MILK	SS	CWT	EMA	RIB	RUMP	RBY	IMF
EBV	+1.4	+0.1	-4.9	+4.1	+45	+74	+97	+80	+10	+1.7	+58	+0.3	-1.2	-0.6	+0.1	+1.4
ACC	60%	51%	80%	79%	81%	78%	79%	75%	71%	76%	66%	66%	65%	67%	56%	71%
PERC	64	81	44	54	81	94	91	83	93	67	80	98	77	57	65	74

\$ Index Values	
\$A	\$A-L
\$134	\$240



21 VENTURON *Uruguay* U153

Born: 18/07/2023 | Tattoo: VE7 U153 | Unregistered

PURCHASER: _____ \$ _____

	CE-DIR	CE-DTR	GL	BW	200	400	600	MCW	MILK	SS	CWT	EMA	RIB	RUMP	RBY	IMF
EBV	-	-	-	-	-	-	-	-	-	-	-	-	-	-	-	-
ACC	-	-	-	-	-	-	-	-	-	-	-	-	-	-	-	-
PERC	-	-	-	-	-	-	-	-	-	-	-	-	-	-	-	-

\$ Index Values	
\$A	\$A-L
-	-

We really like what this bull has to offer. He has added muscle shape and meat in all the right places. Unregistered due to his dam being a Canadian embryo we purchased that didn't have DNA on file.

Sire:

ROSELEIGH QUARTERBACK Q19

WK SMOOTH 2382

Dam:

VENTURON ECHO S66

HF ECHO 45Y



22 VENTURON *Universal* U110^{PV}

Born: 17/05/2023 | Tattoo: RTT23U110 | HBR
AMFU, CAFU, DDFU, NHFU, RGC- BW, 200WT, Genomics

PURCHASER: _____ \$ _____

	CE-DIR	CE-DTR	GL	BW	200	400	600	MCW	MILK	SS	CWT	EMA	RIB	RUMP	RBY	IMF
EBV	+4.1	+5.5	-9.5	+4.2	+54	+96	+127	+137	+11	+2.3	+61	+3.7	+2.5	+4.2	-0.4	+0.7
ACC	68%	60%	83%	83%	84%	82%	83%	79%	77%	80%	73%	72%	72%	73%	65%	76%
PERC	39	29	3	57	37	43	36	9	90	44	73	82	8	3	87	88

\$ Index Values	
\$A	\$A-L
\$160	\$330

We used U110 to back up all of our Real Deal daughters. He is the calf that was in Coonamble H251 when we purchased her in partnership with WD Land and Cattle at the Coonamble reduction sale. Red Carrier out of Hectors full sister. Your opportunity to add some great genetics.

Sire:

COONAMBLE ELEVATOR E11 WDCE11^{PV}
COONAMBLE LEADER L325 WDCL325^{PV}
COONAMBLE D94 WDCD94^{SV}
COONAMBLE PRIDE P23 WDCEP23^{PV}
TUWHARETOA REGENT D145 BNAD145^{PV}
COONAMBLE J120 WDCJ120^{SV}
ARDROSSAN PRINCESS Z26 NAQZ26^{SV}

Dam:

HYLINE RIGHT TIME 338 USA13058662[#]
K C F BENNETT PERFORMER USA14885809[#]
K C F MISS 589 L182 USA13852823[#]
COONAMBLE H251 WDCH251^{PV}
COONAMBLE Z3 WDCZ3^{PV}
COONAMBLE E9 WDCE9^{PV}
BANGADANG LOWAN A61 WHHA61^{PV}



23 VENTURON *Ultra Cool Deal U176*^{PV}

Born: 23/08/2023 | Tattoo: RTT23U176 | HBR
AMFU, CAFU, DDFU, NHFU - GL, BWT, Genomics

PURCHASER: _____ \$ _____

	CE-DIR	CE-DTR	GL	BW	200	400	600	MCW	MILK	SS	CWT	EMA	RIB	RUMP	RBY	IMF
EBV	+4.8	-0.9	-2.3	+5.3	+56	+100	+126	+99	+18	+1.7	+77	+9.9	-0.5	-0.5	+0.5	+1.4
ACC	64%	52%	82%	81%	82%	80%	80%	77%	72%	78%	68%	68%	68%	69%	59%	73%
PERC	32	87	82	79	31	31	38	56	47	67	27	16	62	55	40	74

\$ Index Values	
\$A	\$A-L
\$249	\$409

Spring Born

Kicking off the spring born bulls with one of the Coolest Real Deals of the sale. U176 made a lot of friends on the show road this year after being Grand champion bull at Beverley show and reserve Angus bull in Perth. His dam is the best Maximus daughter we have and has joined the donor pen this year. This bull is well worth your inspection.

Sire:

H P C A INTENSITY USA17366506[#]
RENNYLEA N542 NORN542^{PV}
RENNYLEA EISA ERICA G366 NOR366^{SV}
ALPINE REAL DEAL R163 CGKR163^{PV}
TE MANIA LONGSHOT L107 VTML107^{SV}
ALPINE LONGSHOT P354 CGKP354^{PV}
ALPINE M242 CGKM242^{PV}

Dam:

BRAVEHEART OF STERN NZE1217000784^{SV}
GRANITE RIDGE MAXIMUS M34 SJKM34^{SV}
GRANITE RIDGE BONNEY K232 SJKK232[#]
VENTURON DIANA S134 RTT21S134^{PV}
PLATTEMERE WEIGH UP K360 USA16692552[#]
DIAMOND TREE WEIGH UP M29 IHSM29^{SV}
DIAMOND TREE TRUST K200 WKGK200[#]



24 VENTURON *Earnan U217*^{SV}

Born: 03/09/2023 | Tattoo: RTT23U217 | HBR
AMFU, CAFU, DDFU, NHFU - BWT, Genomics

PURCHASER: _____ \$ _____

	CE-DIR	CE-DTR	GL	BW	200	400	600	MCW	MILK	SS	CWT	EMA	RIB	RUMP	RBY	IMF
EBV	-20.5	-9.8	-0.6	+9.3	+59	+104	+134	+134	+9	+3.6	+73	+8.5	-1.3	-3.1	+1.6	+0.0
ACC	67%	59%	82%	81%	83%	81%	81%	78%	75%	79%	71%	70%	70%	71%	63%	75%
PERC	99	99	95	99	20	21	23	11	96	10	38	27	79	90	3	96

\$ Index Values	
\$A	\$A-L
\$143	\$254

Spring Born

Absolute power plus. This bull ticks all the boxes for those looking for the terminal type Angus bull. His calves are going to wean heavy.

Sire:

CONNELLY CONSENSUS USA15513367[#]
CONNELLY EARNAN 076E USA16969555^{PV}
BRAZILA OF CONANGA 3991 839A USA16246696[#]
TEXAS EARNAN L612 DXTL612^{PV}
TE MANIA BERKLEY B1 VTMB1^{PV}
TEXAS UNDINE H638 DXTH638^{PV}
TEXAS UNDINE Z183 DXTZ183^{PV}

Dam:

S A V FRONT RUNNER 0713 USA0713[#]
DIAMOND TREE FRONT RUNNER B103 WKGB103^{SV}
DIAMOND TREE WALK ON X33 WKGX33[#]
DIAMOND TREE FRONT RUNNER M243 IHSM243[#]
B/R NEW FRONTIER 095 USA095[#]
DIAMOND TREE FRONTIER B45 WKGGB45[#]
DIAMOND TREE MODEST Z4 WKGZ4[#]



25 VENTURON *Earnan U211*^{SV}

Born: 02/09/2023 | Tattoo: RTT23U211 | HBR
AMFU, CAFU, DDFU, NHFU - GL, BWT, Genomics

PURCHASER: _____ \$ _____

	CE-DIR	CE-DTR	GL	BW	200	400	600	MCW	MILK	SS	CWT	EMA	RIB	RUMP	RBY	IMF
EBV	-12.8	-11.5	-3.4	+7.3	+54	+102	+124	+100	+19	+2.9	+77	+5.3	-1.6	-2.8	+0.5	+2.7
ACC	64%	55%	81%	81%	81%	80%	80%	76%	73%	78%	68%	68%	68%	69%	60%	72%
PERC	99	99	68	97	37	26	42	54	34	24	27	64	84	88	40	42

\$ Index Values	
\$A	\$A-L
\$175	\$280

Spring Born

Another L612 son who has stood out all year. He has been the heaviest in his contemporary his whole life. We love the power and presence this bull has.

Sire:

CONNEALY CONSENSUS USA15513367#
CONNEALY EARNAN 076E USA16969555^{PV}
BRAZILA OF CONANGA 3991 839A USA16246696*
TEXAS EARNAN L612 DXTL612^{PV}
TE MANIA BERKLEY B1 VTMB1^{PV}
TEXAS UNDINE H638 DXTH638^{PV}
TEXAS UNDINE Z183 DXTZ183^{PV}

Dam:

BRAVEHEART OF STERN NZE1217000784^{SV}
GRANITE RIDGE MAXIMUS M34 SJKM34^{SV}
GRANITE RIDGE BONNEY K232 SJKK232#
VENTURON STELLA R12 RTTR12#
MILLAH MURRAH DOCKLANDS J193 NMMJ193^{SV}
MONTEREY STELLA N21 WGIN21#
MONTEREY STELLA F65 WGJF65#



26 VENTURON *Ucla U228*[#]

Born: 01/10/2023 | Tattoo: RTT23U228 | HBR
AMFU, CAFU, DDFU, NH25%

PURCHASER: _____ \$ _____

	CE-DIR	CE-DTR	GL	BW	200	400	600	MCW	MILK	SS	CWT	EMA	RIB	RUMP	RBY	IMF
EBV	-	-	-	-	-	-	-	-	-	-	-	-	-	-	-	-
ACC	-	-	-	-	-	-	-	-	-	-	-	-	-	-	-	-
PERC	-	-	-	-	-	-	-	-	-	-	-	-	-	-	-	-

\$ Index Values	
\$A	\$A-L
-	-

Spring Born

A stylish late born bull that has a lot to offer. He appeals through his sirey head and soft carcass. His dam is an Enhance daughter out of one of John Young's best breeding females. EBVs will be available prior to sale day.

Sire:

SITZ UPWARD 307R USA14963730^{SV}
KOPALS B&B IDENTITY USA16710463^{SV}
B&B ERICA 605 USA15462235#
ROSELEIGH QUARTERBACK Q19 SCRQ19^{PV}
KAROO D98 DULCIFY G149 NENG149^{SV}
ROSELEIGH SARAH L62 SCRL62^{SV}
ROSELEIGH SARAH D29 SCRD29#

Dam:

SYDGEN EXCEED 3223 USA17501893^{PV}
SYDGEN ENHANCE USA18170041^{SV}
SYDGEN RITA 2618 USA17405676#
VENTURON ANNABELLE S141 RTT21S141#
PATHFINDER GOLDMARK D189 SMPD189^{PV}
STRATHAY ANNABELLE H15 WJYH15#
STRATHAY ANNABELLE E116 WJYE116#



27 VENTURON *Uranus* U252^{SV}

Born: 19/10/2023 | Tattoo: RTT23U252 | HBR
AMFU, CAFU, DDFU, NHFU - BWT, Genomics

PURCHASER: _____ \$ _____

	CE-DIR	CE-DTR	GL	BW	200	400	600	MCW	MILK	SS	CWT	EMA	RIB	RUMP	RBY	IMF
EBV	-10.4	-0.8	+1.3	+6.4	+50	+90	+109	+115	+6	+2.5	+63	+8.8	-0.7	-0.6	+1.3	+0.1
ACC	62%	52%	81%	81%	82%	80%	80%	77%	72%	78%	68%	67%	67%	68%	58%	73%
PERC	99	86	99	92	57	62	75	31	99	37	68	24	67	57	7	95

\$ Index Values	
\$A	\$A-L
\$158	\$284

Spring Born

A bigger framed performance based Q19 son. His dam is a great long square cow who had an impressive Knowla Packer son in last year's sale.

Sire:

SITZ UPWARD 307R USA14963730^{SV}
KOUPLS B&B IDENTITY USA16710463^{SV}
B&B ERICA 605 USA15462235[#]
ROSELEIGH QUARTERBACK Q19 SCRQ19^{PV}
KAROO D98 DULCIFY G149 NENG149^{SV}
ROSELEIGH SARAH L62 SCL62^{SV}
ROSELEIGH SARAH D29 SCRD29[#]

Dam:

BRAVEHEART OF STERN NZE1217000784^{SV}
GRANITE RIDGE MAXIMUS M34 SJKM34^{SV}
GRANITE RIDGE BONNEY K232 SJKK232[#]
VENTURON REBECCA Q16 RTTQ16[#]
JINDRA DOUBLE VISION USA16748826^{SV}
DIAMOND TREE DOUBLE VISION M131 IHSM131[#]
DIAMOND TREE PERFORMER H44 WKGH44[#]



28 VENTURON *Utility* U239^{SV}

Born: 12/10/2023 | Tattoo: RTT23U239 | HBR
AMFU, CAFU, DD7%, NHFU - BWT, Genomics

PURCHASER: _____ \$ _____

	CE-DIR	CE-DTR	GL	BW	200	400	600	MCW	MILK	SS	CWT	EMA	RIB	RUMP	RBY	IMF
EBV	-2.5	-8.0	+0.9	+5.4	+49	+88	+105	+117	+15	+0.5	+69	+0.4	-1.0	-1.1	+0.3	+2.8
ACC	62%	52%	81%	81%	81%	79%	80%	76%	72%	77%	68%	67%	67%	68%	58%	72%
PERC	86	99	99	81	66	69	82	27	70	95	50	97	73	66	53	40

\$ Index Values	
\$A	\$A-L
\$155	\$286

Spring Born

The first son we've offered out of the Monterey Elle N159 female we purchased for \$10,000 in 2022. We are excited to see how this son matures.

Sire:

SITZ UPWARD 307R USA14963730^{SV}
KOUPLS B&B IDENTITY USA16710463^{SV}
B&B ERICA 605 USA15462235[#]
ROSELEIGH QUARTERBACK Q19 SCRQ19^{PV}
KAROO D98 DULCIFY G149 NENG149^{SV}
ROSELEIGH SARAH L62 SCL62^{SV}
ROSELEIGH SARAH D29 SCRD29[#]

Dam:

MATAURI REALITY 839 NZE14647008839[#]
MILLAH MURRAH REALITY K61 NMMK61^{PV}
MILLAH MURRAH FLOWER H76 NMMH76^{PV}
MONTEREY ELLE N159 WGJN159[#]
VERMONT DUKE E193 CCVE193^{PV}
MONTEREY ELLE L18 WGJL18[#]
MONTEREY ELLE E27 WGJE27[#]



Spring Born

Uncle Pete is a long bodied slick coated son of Q19. A long made bull with a great hair type.

29 VENTURON *Uncle Pete* U230^{SV}

Born: 04/10/2023 | Tattoo: RTT23U230 | HBR
AMFU,CAFU,DDFU,NHFU - BWT,Genomics

PURCHASER: _____ \$ _____

	CE-DIR	CE-DTR	GL	BW	200	400	600	MCW	MILK	SS	CWT	EMA	RIB	RUMP	RBY	IMF
EBV	-3.7	-3.9	-2.7	+6.2	+40	+83	+96	+99	+8	+2.2	+65	+8.1	-0.8	-0.3	+1.6	+0.0
ACC	61%	51%	80%	80%	81%	79%	79%	75%	71%	77%	66%	66%	66%	67%	57%	71%
PERC	90	96	78	91	93	79	92	56	97	48	62	31	69	51	3	96

\$ Index Values	
\$A	\$A-L
\$135	\$252

Sire:

SITZ UPWARD 307R USA14963730^{SV}
KOUPLS B&B IDENTITY USA16710463^{SV}
B&B ERICA 605 USA15462235[#]
ROSELEIGH QUARTERBACK Q19 SCRQ19^{PV}
KAROO D98 DULCIFY G149 NENG149^{SV}
ROSELEIGH SARAH L62 SCL62^{SV}
ROSELEIGH SARAH D29 SCR29[#]

Dam:

BRAVEHEART OF STERN NZE1217000784^{SV}
GRANITE RIDGE MAXIMUS M34 SJKM34^{SV}
GRANITE RIDGE BONNEY K232 SJKK232[#]
VENTURON ELEGANT S47 RTT21 S47[#]
VERMONT DUKE E190 CCVE190^{PV}
MONTEREY ELEGANT G16 WGJG16[#]
MONTEREY ELEGANT B117 WGJB117[#]



Spring Born

Ursus comes from one of the best female lines we purchased with the Diamond Tree herd. This bull will sire easy care females and steers with do ability in a range of environments.

30 VENTURON *Ursus* U235^{SV}

Born: 11/10/2023 | Tattoo: RTT23U235 | HBR
AMFU,CAFU,DDFU,NHFU - BWT,Genomics

PURCHASER: _____ \$ _____

	CE-DIR	CE-DTR	GL	BW	200	400	600	MCW	MILK	SS	CWT	EMA	RIB	RUMP	RBY	IMF
EBV	-6.5	+2.8	+1.3	+5.3	+47	+83	+105	+83	+11	+1.6	+73	+13.9	-0.3	+0.3	+1.9	-0.5
ACC	62%	52%	81%	81%	81%	79%	80%	76%	72%	77%	67%	67%	67%	68%	58%	72%
PERC	96	59	99	79	74	80	81	79	89	71	38	2	57	40	2	99

\$ Index Values	
\$A	\$A-L
\$166	\$266

Sire:

SITZ UPWARD 307R USA14963730^{SV}
KOUPLS B&B IDENTITY USA16710463^{SV}
B&B ERICA 605 USA15462235[#]
ROSELEIGH QUARTERBACK Q19 SCRQ19^{PV}
KAROO D98 DULCIFY G149 NENG149^{SV}
ROSELEIGH SARAH L62 SCL62^{SV}
ROSELEIGH SARAH D29 SCR29[#]

Dam:

R B TOUR OF DUTY 177 USA16984170^{PV}
DIAMOND TREE TOUR OF M177 IHSM177^{SV}
DIAMOND TREE LEGACY E102 WKGE102[#]
VENTURON TIBBIE P10 RTTP10[#]
PLATTEMERE WEIGH UP K360 USA16692552[#]
DIAMOND TREE WEIGH UP M114 IHSM114[#]
DIAMOND TREE REGENT K31 WKGK31[#]

EBV Quick Reference for Charolais Bulls

Animal Ident.	CE-DIR	CE-DTR	GL	BW	200	400	600	MCW	MILK	SS	CWT	EMA	RIB	RUMP	RBV	IMF	DTI (\$)	NMI (\$)
31	VE7 22T241E	-0.3	-1.4	-0.3	+8	+22	+30	+30	+11	+2.8	+17	+1.3	+0.9	+1	-0.1	-0.2	\$20	\$52
32	VE7 22T249E	-13.8	-3.9	+1.8	+10	+20	+30	+18	+1	+0.1	+15	+1.1	+1	+0.6	+0.1	-0.6	\$4	\$20
33	VE7 23U128E	-3.1	+1.3	-1.7	+8	+23	+38	+19	+15	+1.5	+27	+2.1	-0.1	0	+0.9	-0.5	\$25	\$54
34	VE7 23U148E	-0.1	+2.9	-0.2	+19	+37	+56	+55	+16	+2	+28	+1.4	+1.2	+1.3	-0.1	-0.2	\$37	\$70
35	VE7 23U68E	-3.3	0	-0.9	+12	+25	+31	+28	+8	+0.9	+15	-0.1	+0.5	+0.5	-0.7	+0.1	\$20	\$33
36	VE7 23U16E	-	-	-	-	-	-	-	-	-	-	-	-	-	-	-	-	-
37	VE7 23U99E	+0.6	+1	-2.4	+8	+20	+24	+15	+11	+1.4	+13	-0.7	+1.1	+1.5	-1.6	+0.5	\$17	\$39
38	VE7 23U78E	-3.5	-2.5	-0.2	+14	+30	+41	+40	+9	+1.8	+23	+1.7	+0.4	+0.6	+0.1	0	\$27	\$45
39	VE7 23U54E	-10.1	-0.5	+2.5	+17	+32	+43	+37	+4	+1.4	+25	+0.9	+0.4	+0.2	+0.5	-0.8	\$19	\$41
40	VE7 23U103E	-9.1	-7.2	+1.8	+15	+30	+45	+39	+10	+1.2	+22	+2.3	+0.4	+0.5	+0.5	+0.1	\$23	\$37
41	VE7 23U80E	-5.8	-4.7	+2.1	+10	+31	+39	+45	+14	+2.5	+25	+3.4	+1.1	+1.5	+0.6	-0.4	\$25	\$44
42	VE7 23U81E	-8	+4.4	+0.3	+10	+20	+23	+21	+3	+1	+12	+0.5	+0.4	+0.5	-0.2	0	\$12	\$20
43	VE7 23U30E	+5.5	-2	0	+4	+11	+16	+14	+9	+1.1	+13	+0.6	-1.1	-1.6	+0.9	-0.5	\$15	\$18
44	VE7 23U77E	+2	-5.1	-1.8	+12	+22	+31	+28	+9	+1.3	+17	+1.3	+2.6	+3.4	-1.7	+0.7	\$22	\$56
45	VE7 23U122E	+3.9	-	-3	+7	+21	+15	+1	+10	+1.4	+17	+0.5	+1.4	+1.5	-1.2	+0.1	\$20	\$51
46	VE7 23U208E	-2.4	-1.5	+1.5	+12	+27	+39	+46	+6	+1.2	+25	+2.6	0	-0.2	+0.9	0	\$26	\$35
47	VE7 23U215E	+1.2	-1.4	-1.5	-2	-2	-8	-10	+2	+0.3	+1	+1.5	+1.9	+2.1	-0.7	-0.3	-\$3	\$13
48	VE7 23U189E	-0.8	+3.1	+0.4	+12	+28	+45	+48	-1	+1.4	+26	+2.7	+1.4	+2.4	-0.3	+1	\$30	\$63
49	VE7 23U220E	-3.1	+0.5	+0.5	+14	+33	+41	+42	+5	+2.5	+21	-0.5	+0.4	+0.3	-1.1	+0.5	\$24	\$53
50	VE7 23U188E	+6.6	+0.1	-4.9	+13	+27	+36	+27	+9	+3.4	+21	+0.3	+1.2	+1.3	-1.1	+0.3	\$29	\$77
51		-	-	-	-	-	-	-	-	-	-	-	-	-	-	-	-	-
52	VE7 23U250E	-5.6	+0.8	+0.3	+15	+31	+42	+33	+11	+1	+25	+2.4	+1	+1.3	+0.4	-0.2	\$29	\$55
53	VE7 23U238E	-1.3	-0.1	-2.9	+11	+24	+38	+28	+15	+1.3	+21	+2.4	+0.7	+0.8	+0.4	+0.1	\$24	\$52

Breed Average EBVs for 2022 Born Calves

	CE-DIR	CE-DTR	GL	BW	200	400	600	MCW	MILK	SS	CWT	EMA	RIB	RUMP	RBV	IMF
EBV	+0.8	+0.7	-2.6	+0.3	+12	+23	+31	+32	+6	+1.0	+19	+1.5	+0.4	+0.4	+0.1	+0.1

CHAROLAIS REFERENCE SIRES



Ascot Ramrod R104

We purchased Ramrod for \$28000 in the 2021 Ascot Sale as our pick yearling. We really like the maternal elements of his pedigree combining Ledger and Authority. He's been such a great breeding piece for us being able to be used over a variety of types of females. His sons have been extremely popular in the bull pen and this year's sons are standouts.



Venturon Maximum Impact M60

Max has been one of the best bulls we've raised in our program. On a trip to NSW in 2022 Harris saw Max at Winchester Livestock and we just knew we had to have him back. We lost Max to a snakebite last year so unfortunately this will be his last offering of sons in the sale.



LT Affinity

This is our second crop of Affinity sons and we find him the go to calving ease sire that will add muscle and softness. In July last year whilst touring Lindskovs LT ranch in America, Harris was in awe of the Affinity daughters and his dam who was as sound made as they come. This year's sons are standouts in their group and we look forward to seeing how they grow on.



HRJ Holy Water 44H

The first sons to be offered in Australia by our new exclusive AI sire. We were blown away by Holy Water's overall carcass merit and sire appeal all while being a bull we could use on heifers as well as cows. Holy Water has done everything we had hoped he would. His daughters are beautiful long made females with 3 that will feature in our Sydney team on his first calf crop.



An absolute maternal powerhouse pedigree to kick off the Charolais division. Combining one of our great females of the herd with one of our favourite Charolais cows in the breed, SVY Starstruck 409B. Hes such a big upstanding bull who has a phenomnl amount of top in him and just like all of our Trusts, a seriously good foot.

HOMOZYGOUS POLL

Sire:

Dam:

31 VENTURON *Trust T241* (AI)(ET)(P)

Born: 19/10/2022 | Tattoo: VE7 22T241E | BPAF

PURCHASER: _____ \$

M6 COOL REP 8108 EM770701 (PED E701E)
M6 BELLS & WHISTLES 258 PMC775299 (PED H5299E) (P)
M6 MS GAIN & GRADE 552 PF1042277 (PED G2277E) (P)
SVY TRUST 6H PEMC792307 (OAC R2307E) (P)
TR PZC MR TURTON 0794 ET PEMC340611 (OAU F987E) (P)
SVY STARSTRUCK 409B PEFC412578 (OAC K2578E) (P)
SVY STARTSTRUCK 8X FC382684 (OAC F8E) (P)
CCR SURESHOT 1107F7 ET M456598 (OAU R1107E) (P)
VENTURON CRUSTY DEMON (VE7 C5E) (P)
LINKLETTER A7E (UA A7E)
VENTURON HILLARY (VE7 H43E) (P)
VENTURON ARCHIE (VE7 A18E) (P)
VENTURON ELLE (VE7 E16E) (P)
VENTURON COLETTE (VE7 C11E)

	CE DIR	CE DTR	GL	BW	200	400	600	MCW	MILK	SS	CW	EMA	RIB	RUMP	RBY	IMF	\$ Index Values	
EBV	-0.3	-1.4	-5.3	-0.3	+8	+22	+30	+30	+11	+2.8	+17	+1.3	+0.9	+1.0	-0.1	-0.2	DTI (\$)	NMI (\$)
ACC	37%	30%	67%	70%	63%	61%	59%	52%	45%	70%	47%	43%	49%	47%	45%	42%	\$20	\$52



One of two red factor bulls in this year's sale and what an absolute standout he is. We just love this bull's length of body and kind nature. His mum is a functional cow who has raised some great calves. He's going to sire big time performance commercial calves and looks to be a carbon copy of his sire Fan Favourite. Impeccable foot structure.

HOMOZYGOUS POLL

Sire:

Dam:

32 VENTURON *Touchdown T249* (AI)(P)(R/F)

Born: 20/10/2022 | Tattoo: VE7 22T249E | BPAF

PURCHASER: _____ \$

WINN MANS SKAGGS 663X PMC336073 (OAC F663E) (P)
SPARROWS ESTEVEZ 471B PMC360350 (PED K471E) (P)
SPARROWS DAWN 134W PFC385282 (PED E134E)
HRJ FAN FAVOURITE 804F QPMC750711 (OAC P804E) (P)
HRJ MR RED TAZ 23P QMC291970 (PED Z23E)
HRJ MISS PARIS 7S PFC392753 (PED B7E) (P)
HRJ MISS PARIS 40P PFC340333 (PED Z40E) (P)
KOOYONG ERIC (H2E E5E) (P)
KOOYONG KIRWAN (H2E K58E) (P)
KOOYONG XENO (H2E X26E)
VENTURON MEXICANA (VE7 M58E) (P)
VENTURON FRANKIE (VE7 F10E) (P)
VENTURON KOLETTE (VE7 K10E) (P)
VENTURON COLETTE (VE7 C11E)

	CE DIR	CE DTR	GL	BW	200	400	600	MCW	MILK	SS	CW	EMA	RIB	RUMP	RBY	IMF	\$ Index Values	
EBV	-13.8	-3.9	-1.9	+1.8	+10	+20	+30	+18	+1	+0.1	+15	+1.1	+1.0	+0.6	+0.1	-0.6	DTI (\$)	NMI (\$)
ACC	35%	27%	72%	68%	59%	57%	60%	51%	39%	58%	45%	39%	50%	49%	41%	39%	\$4	\$20



The coolest Maximum Impact son we've raised to date. Check out this bulls length of body and extension of front. He's the natural calf out of our superstar donor Naughty But Nice and one of her flashest sons yet. He was the Grand Champion Charolais bull at the 2024 Perth Royal show and has continued to grow on and impress us.

HOMOZYGOUS POLL

Sire:

CEDARDALE YELLOWSTONE 25Y MC342657 (OAC G2657E) (P)
VENTURON KEYSTONE (VE7 K14E) (P)
VENTURON ELECTRA (VE7 E12E) (P)
VENTURON MAXIMUM IMPACT (VE7 M60E) (P)
VENTURON CRUSTY DEMON (VE7 C5E) (P)
VENTURON HILLARY (VE7 H43E) (P)
VENTURON ELLE (VE7 E16E) (P)

Dam:

KOOYONG ERIC (H2E E5E) (P)
KOOYONG KIRWAN (H2E K58E) (P)
KOOYONG XENO (H2E X26E)
VENTURON NAUGHTY BUT NICE (VE7 N31E) (P)
VENTURON CRUSTY DEMON (VE7 C5E) (P)
VENTURON GAYLE (VE7 G35E) (P)
VENTURON COOL CAT (VE7 C23E) (P)

33 VENTURON *Ultimate Impact U128* (P)

Born: 12/06/2023 | Tattoo: VE7 23U128E | BPAC

PURCHASER: _____ \$ _____

	CE DIR	CE DTR	GL	BW	200	400	600	MCW	MILK	SS	CW	EMA	RIB	RUMP	RBY	IMF	\$ Index Values	
EBV	-3.1	+1.3	-5.7	-1.7	+8	+23	+38	+19	+15	+1.5	+27	+2.1	-0.1	+0.0	+0.9	-0.5	DTI (\$)	NMI (\$)
ACC	45%	36%	69%	76%	65%	63%	62%	55%	49%	59%	48%	41%	51%	50%	43%	41%	\$25	\$54



Stud sire written all over this guy. We absolutely love this bulls make up and his easy doing ability. He's in the top 10% for 200, 400 and 600 day growth and in the top 5% for milk and gestation length. This bull ticks a lot of boxes being a PA free homo polled son of Duty Free and out of our great donor Hillary H43. He's a maternal brother to Hillary P27, Maximum Impact and Quintessential. He is an ET brother to the Spend It bull we sold to great clients the Miell Family in Narrikup and if he breeds calves like him you will be on a winner. This bull is well worth a look.

HOMOZYGOUS POLL

Sire:

PLEASANT DAWN MAGNUM 56T QPMC309830 (PED C56E) (P)
PLEASANT DAWN MVP 316Y MC337966 (PED G316E) (P)
PLEASANT DAWN RIO 216 PFC335466 (PED Z216E) (P)
TURNBULLS DUTY-FREE 358D MC701309 (OAC M1309E) (P)
PLEASANT DAWN MAXIMUM 138X MC331851 (PED F1851E) (P)
CTP MISS GOOGLE 358Z FC399808 (PED H9808E) (P)
RTP MISS SELECT 14K FC291296 (PED V1296E) (P)

Dam:

CCR SURESHOT 1107F7 ET M456598 (OAU R1107E) (P)
VENTURON CRUSTY DEMON (VE7 C5E) (P)
LINKLETTER A7E (UA A7E)
VENTURON HILLARY (VE7 H43E) (P)
VENTURON ARCHIE (VE7 A18E) (P)
VENTURON ELLE (VE7 E16E) (P)
VENTURON COLETTE (VE7 C11E)

34 VENTURON *Up The Dollars U148* (AI)(ET)(P)

Born: 30/06/2023 | Tattoo: VE7 23U148E | BPAP

PURCHASER: _____ \$ _____

	CE DIR	CE DTR	GL	BW	200	400	600	MCW	MILK	SS	CW	EMA	RIB	RUMP	RBY	IMF	\$ Index Values	
EBV	-0.1	+2.9	-7.1	-0.2	+19	+37	+56	+55	+16	+2.0	+28	+1.4	+1.2	+1.3	-0.1	-0.2	DTI (\$)	NMI (\$)
ACC	49%	40%	72%	76%	72%	70%	70%	62%	59%	68%	57%	49%	61%	59%	50%	49%	\$37	\$70



One of Harris's picks of the sale. A bull who has stood out all year. A beautiful slick hair coat on this bull with added cover and great mobility. His mum is up there with our best Keystone daughters who will join our donor line up this year. His maternal sister will feature in our show team this year.
HOMOZYGOUS POLL

35 VENTURON *Upward*U68 (P)

Born: 05/04/2023 | Tattoo: VE7 23U68E | BPAF

PURCHASER: _____ \$ _____

Sire:

LHD CHOTEAU B1699 M856888 (PED K6888E) (P)
LT AUTHORITY 7229 PLD M898189 (OAU N8189E) (P)
LT KATY 4273 PLD F1190477 (PED K477E) (P)
ASCOT RAMROD R104E (JAJ R104E) (P)
LT LEDGER 0332 M791626 (OAU F3168E) (P)
ASCOT PASTILLE L30E (JAJ L30E) (P)
ASCOT PASTILLE (JAJ E2E)

CEDARDALE YELLOWSTONE 25Y MC342657 (OAC G2657E) (P)
VENTURON KEYSTONE (VE7 K14E) (P)
VENTURON ELECTRA (VE7 E12E) (P)
VENTURON BRIDGET P77 (VE7 P77E) (P)
VENTURON BOYD (VE7 B24E) (P)
VENTURON ELLI-MAE (VE7 E25E) (P)
VENTURON BRIGETTE (VE7 B6E) (P)

Dam:

	CE DIR	CE DTR	GL	BW	200	400	600	MCW	MILK	SS	CW	EMA	RIB	RUMP	RBY	IMF	\$ Index Values	
EBV	-3.3	+0.0	-7.0	-0.9	+12	+25	+31	+28	+8	+0.9	+15	-0.1	+0.5	+0.5	-0.7	+0.1	DTI (\$)	NMI (\$)
ACC	39%	31%	63%	72%	63%	63%	61%	54%	43%	62%	49%	43%	55%	53%	46%	43%	\$20	\$33



ET brother to Venturon Clementine Q11 "Pod". This bull has been a favourite of many who have toured the bull pasture this year. He's such a stout made bull with so much middle and top in him. Unfortunately we only had the one embryo from this flush, because we would have loved a pen like him.
POLLED

36 VENTURON *U16E* (AI)(ET)(P)

Born: 04/03/2023 | Tattoo: VE7 23U16E | BPAF

PURCHASER: _____ \$ _____

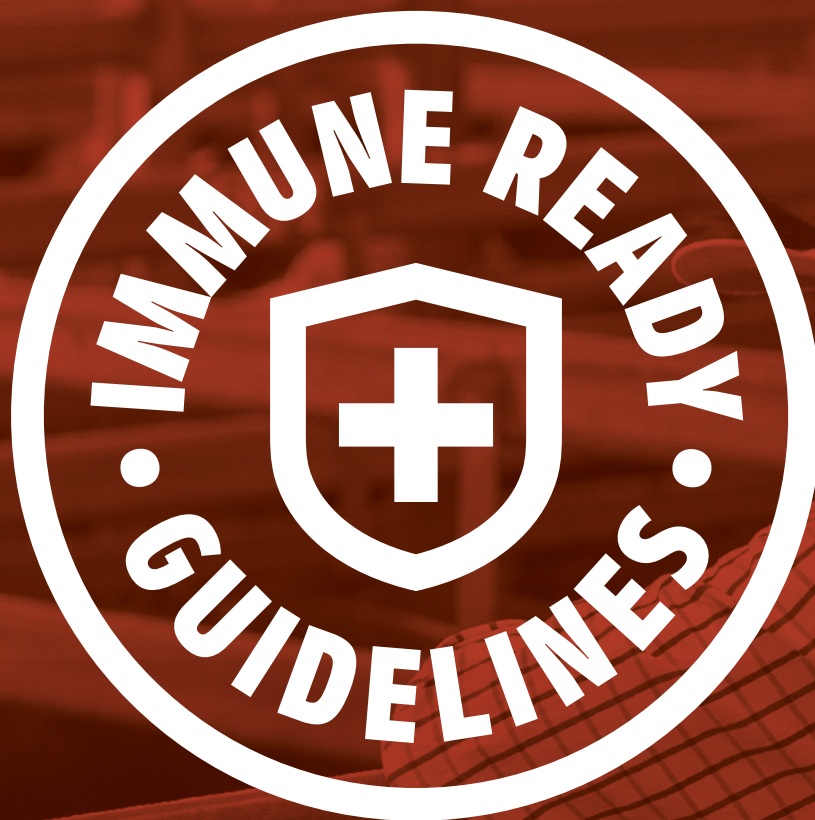
Sire:

SPARROWS MATADOR 7K (PED -4925E)
SPARROWS ALCATRAZ 18N MC284009 (PED -4009E)
SPARROWS BARMAID 218H (PED -5558E)
SVY GRIZZLY PLD 521C PMC364873 (OAC L521E) (P)
SPARROWS LANDMARK 963W MC328725 (PED E963Z)
SVY SADIRA 155Y FC389901 (PED G155E)
SDC SADIRA 31S PCF360658 (PED B31E)

KOOYONG ERIC (H2E E5E) (P)
KOOYONG KIRWAN (H2E K58E) (P)
KOOYONG XENO (H2E X26E)
VENTURON NAUGHTY BUT NICE (VE7 N31E) (P)
VENTURON CRUSTY DEMON (VE7 C5E) (P)
VENTURON GAYLE (VE7 G35E) (P)
VENTURON COOL CAT (VE7 C23E) (P)

Dam:

	CE DIR	CE DTR	GL	BW	200	400	600	MCW	MILK	SS	CW	EMA	RIB	RUMP	RBY	IMF	\$ Index Values	
EBV																	DTI (\$)	NMI (\$)
ACC																		



IT'S A SIGN OF BETTER PRODUCTIVITY AND ANIMAL HEALTH

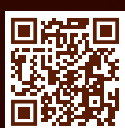
'Immune Ready' is a guideline for the care of sale cattle. It helps protect cattle in the preparation, transport and arrival post sale.

FOR BUYERS

- It reduces the risk of disease in purchased cattle
- It improves farm biosecurity
- It improves animal health and welfare

FOR SELLERS

- It prepares your cattle for potential disease challenges
- It allows you to promote and sell premium cattle
- It helps safeguard against disease and improve productivity



**Learn more about
Immune Ready Guidelines**

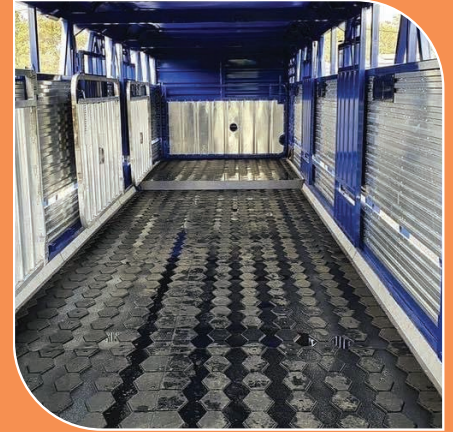
ENDORSED BY





M: 0429 047 842

E: info@surefootmatwa.com.au



Clean up your slippery hot spots in
yards / trucks with SureFoot

All products made for 60-100% recycled tyre's





A moderate tank who was a 2 yo heifer's first calf. This bull is so true to the Ramrod kind, beautiful muscle pattern with that added cover the modern day Charolais needs. For those after a lower birthweight bull who's going to meet the market specs, Utah is for you.

POLLED

Sire:

LHD CHOTEAU B1699 M856888 (PED K6888E) (P)
LT AUTHORITY 7229 PLD M898189 (OAU N8189E) (P)
LT KATY 4273 PLD F1190477 (PED K477E) (P)
ASCOT RAMROD R104E (JAJ R104E) (P)
LT LEDGER 0332 M791626 (OAU F3168E) (P)
ASCOT PASTILLE L30E (JAJ L30E) (P)
ASCOT PASTILLE (JAJ E2E)

Dam:

VENTURON CRUSTY DEMON (VE7 C5E) (P)
VENTURON HAMISH (VE7 H6E) (P)
VENTURON ELIZA (VE7 E8E) (P)
VENTURON COLETTE S72 (VE7 S72E) (P)
KOOYONG KIRWAN (H2E K58E) (P)
VENTURON NIKKI (VE7 N14E) (P)
VENTURON GEORGIE (VE7 G12E) (P)

37 VENTURON *Utah U99* (P)

Born: 29/04/2023 | Tattoo: VE7 23U99E | BPAF

PURCHASER: _____ \$ _____

	CE DIR	CE DTR	GL	BW	200	400	600	MCW	MILK	SS	CW	EMA	RIB	RUMP	RBY	IMF	\$ Index Values	
EBV	+0.6	+1.0	-4.0	-2.4	+8	+20	+24	+15	+11	+1.4	+13	-0.7	+1.1	+1.5	-1.6	+0.5	DTI (\$)	NMI (\$)
ACC	36%	28%	61%	71%	63%	62%	62%	54%	41%	62%	48%	42%	54%	53%	45%	42%	\$17	\$39



A freak in terms of performance and weight gain. This could be H43's highest performing son yet. This bull has added frame and muscle to the standard Ramrod but ties it all in a refined package.

POLLED

Sire:

LHD CHOTEAU B1699 M856888 (PED K6888E) (P)
LT AUTHORITY 7229 PLD M898189 (OAU N8189E) (P)
LT KATY 4273 PLD F1190477 (PED K477E) (P)
ASCOT RAMROD R104E (JAJ R104E) (P)
LT LEDGER 0332 M791626 (OAU F3168E) (P)
ASCOT PASTILLE L30E (JAJ L30E) (P)
ASCOT PASTILLE (JAJ E2E)

Dam:

CCR SURESHOT 1107F7 ET M456598 (OAU R1107E) (P)
VENTURON CRUSTY DEMON (VE7 C5E) (P)
LINKLETT A7E (LJA A7E)
VENTURON HILLARY (VE7 H43E) (P)
VENTURON ARCHIE (VE7 A18E) (P)
VENTURON ELLE (VE7 E16E) (P)
VENTURON COLETTE (VE7 C11E)

38 VENTURON *Ultra U78* (P)

Born: 11/04/2023 | Tattoo: VE7 23U78E | BPAF

PURCHASER: _____ \$ _____

	CE DIR	CE DTR	GL	BW	200	400	600	MCW	MILK	SS	CW	EMA	RIB	RUMP	RBY	IMF	\$ Index Values	
EBV	-3.5	-2.5	-5.8	-0.2	+14	+30	+41	+40	+9	+1.8	+23	+1.7	+0.4	+0.6	+0.1	+0.0	DTI (\$)	NMI (\$)
ACC	42%	35%	62%	70%	62%	61%	60%	54%	49%	61%	48%	43%	52%	51%	45%	43%	\$27	\$45



A long bodied white son of Fan Favourite. This bull stands on a really good set of feet and legs. His mum is a full sister to New Design who was our sale high seller in 2019.

HOMOZYGOUS POLL

Sire:

WINN MANS SKAGGS 663X PMC336073 (OAC F663E) (P)
SPARROWS ESTEVEZ 471B PMC360350 (PED K471E) (P)
SPARROWS DAWN 134W PFC385282 (PED E134E)
HRJ FAN FAVOURITE 804F QPMC750711 (OAC P804E) (P)
HRJ MR RED TAZ 23P QMC291970 (PED Z23E)
HRJ MISS PARIS 7S PFC392753 (PED B7E) (P)
HRJ MISS PARIS 40P PFC340333 (PED Z40E) (P)

Dam:

KOOYONG ERIC (H2E E5E) (P)
KOOYONG KIRWAN (H2E K58E) (P)
KOOYONG XENO (H2E X26E)
VENTURON MERCEDES (VE7 M40E) (P)
VENTURON CRUSTY DEMON (VE7 C5E) (P)
VENTURON HAYLEY (VE7 H1E) (P)
VENTURON YASMINE (VE7 Y7E) (P)

39 VENTURON *UR A Fan U54 (AI)(P)*

Born: 25/03/2023 | Tattoo: VE7 23U54E | BPAF

PURCHASER: _____ \$ _____

	CE DIR	CE DTR	GL	BW	200	400	600	MCW	MILK	SS	CW	EMA	RIB	RUMP	RBY	IMF	\$ Index Values	
EBV	-10.1	-0.5	-3.8	+2.5	+17	+32	+43	+37	+4	+1.4	+25	+0.9	+0.4	+0.2	+0.5	-0.8	DTI (\$)	NMI (\$)
ACC	37%	29%	70%	72%	61%	58%	59%	52%	43%	58%	45%	39%	49%	48%	41%	39%	\$19	\$41



A bigger framed long made son of Maximum Impact. A bull who's been at the top end of the group for weight through the year. His mum L7 is a cow who has consistently weaned calves at the heavier end of their drops.

POLLED

Sire:

CEDARDALE YELLOWSTONE 25Y MC342657 (OAC G2657E) (P)
VENTURON KEYSTONE (VE7 K14E) (P)
VENTURON ELECTRA (VE7 E12E) (P)
VENTURON MAXIMUM IMPACT (VE7 M60E) (P)
VENTURON CRUSTY DEMON (VE7 C5E) (P)
VENTURON HILLARY (VE7 H43E) (P)
VENTURON ELLE (VE7 E16E) (P)

Dam:

HTA TUNDRA PLD 222B M367810 (OAU M222E) (P)
MNE BOLD VENTURE 38D PMC 166129 (OAC P38D) (P)
MNE MONETTE 24U FC106596 (PED E1065D)
VENTURON LUSCIOUS (VE7 L7E) (P)
LINKLETT Y25E (LJA Y25E)
VENTURON COOL CAT (VE7 C23E) (P)
CULHAM MELLCAT (CU1 M13D) (P)

40 VENTURON *Ultra Impact U103 (P)*

Born: 05/05/2023 | Tattoo: VE7 23U103E | BPAF

PURCHASER: _____ \$ _____

	CE DIR	CE DTR	GL	BW	200	400	600	MCW	MILK	SS	CW	EMA	RIB	RUMP	RBY	IMF	\$ Index Values	
EBV	-9.1	-7.2	-3.1	+1.8	+15	+30	+45	+39	+10	+1.2	+22	+2.3	+0.4	+0.5	+0.5	+0.1	DTI (\$)	NMI (\$)
ACC	45%	37%	68%	74%	63%	61%	62%	55%	50%	58%	48%	40%	49%	47%	41%	39%	\$23	\$37



Pedigree stacked with greats. U80 has intrigued us all year with his unique build with added muscle shape and sheer volume. His mum is a really nice Kingston daughter that hasn't missed. Homo polled and PA free with a pedigree that features some of our best cows.

HOMOZYGOUS POLL

Sire:

CEDARDALE YELLOWSTONE 25Y MC342657 (OAC G2657E) (P)
VENTURON KEYSTONE (VE7 K14E) (P)
VENTURON ELECTRA (VE7 E12E) (P)
VENTURON MAXIMUM IMPACT (VE7 M60E) (P)
VENTURON CRUSTY DEMON (VE7 C5E) (P)
VENTURON HILLARY (VE7 H43E) (P)
VENTURON ELLE (VE7 E16E) (P)

Dam:

WINN MANS LANZA 610S PMC307395 (OAC B7395E) (P)
SPARROWS KINGSTON 139Y PMC341135 (OAC G139E) (P)
SPARROWS DELIGHT 374P FC349349 (PED Z374E)
VENTURON ESTELLA R4 (VE7 R4E) (P)
VENTURON FRANKIE (VE7 F10E) (P)
VENTURON LADY IN WHITE (VE7 L6E) (P)
VENTURON HER MAJESTY (VE7 H28E) (P)

41 VENTURON *U Beauty U80* (P)

Born: 13/04/2023 | Tattoo: VE7 23U80E | BPAF

PURCHASER: _____ \$ _____

	CE DIR	CE DTR	GL	BW	200	400	600	MCW	MILK	SS	CW	EMA	RIB	RUMP	RBY	IMF	\$ Index Values	
EBV	-5.8	-4.7	-3.9	+2.1	+10	+31	+39	+45	+14	+2.5	+25	+3.4	+1.1	+1.5	+0.6	-0.4	DTI (\$)	NMI (\$)
ACC	44%	34%	69%	74%	64%	61%	61%	54%	45%	57%	47%	41%	50%	49%	42%	40%	\$25	\$44



Homo polled Ramrod son out of a beautiful Manhattan 2 year old. His dam has again raised another great bull calf. This bull really commands your attention when you assess him from behind, he has so much width and butt profile for a soft made bull.

HOMOZYGOUS POLL

Sire:

LHD CHOTEAU B1699 M856888 (PED K6888E) (P)
LT AUTHORITY 7229 PLD M898189 (OAU N8189E) (P)
LT KATY 4273 PLD F1190477 (PED K477E) (P)
ASCOT RAMROD R104E (JAJ R104E) (P)
LT LEDGER 0332 M791626 (OAU F3168E) (P)
ASCOT PASTILLE L30E (JAJ L30E) (P)
ASCOT PASTILLE (JAJ E2E)

Dam:

SILVERSTREAM GEDDES G102 083110102D (OAN G102D) (P)
SILVERSTREAM MANHATTAN M171 083160171D (OAN M171E) (P)
SILVERSTREAM WENDY G98 083110098E (PED G98E) (P)
VENTURON BEATRIX S117 (VE7 S117E) (P)
LT WESTERN EDGE 4057 PLD M686616 (OAU Z6616E) (P)
VENTURON WE BEATRIX P41 (VE7 P41E) (P)
DSK T100E BEATRIX W4E (DSK W4E)

42 VENTURON *United U81* (P)

Born: 13/04/2023 | Tattoo: VE7 23U81E | BPAF

PURCHASER: _____ \$ _____

	CE DIR	CE DTR	GL	BW	200	400	600	MCW	MILK	SS	CW	EMA	RIB	RUMP	RBY	IMF	\$ Index Values	
EBV	-8.0	+4.4	-4.0	+0.3	+10	+20	+23	+21	+3	+1.0	+12	+0.5	+0.4	+0.5	-0.2	+0.0	DTI (\$)	NMI (\$)
ACC	39%	33%	64%	69%	63%	62%	60%	53%	43%	61%	49%	43%	54%	52%	45%	43%	\$12	\$20



One of the best Moongool Pilgrim sons we have had and when you look at the female line he's from, it's no mistake why. His Winn Mann Skaggs mum reared one of our sale features last year and she has weaned another good bull calf this year. A beautiful skin and hair type with a great sirey head.

POLLED

Sire:

ANC GUSTAV (ANC G218F) (P)
ANC KIND (ANC K155F) (P)
ANC ISABEAU (ANC A156F)
MOONGOOL PILGRIM (DP2 P319D) (P)
MOONGOOL ELITE (DP2 E213D) (P)
MOONGOOL DELVEIN 12 (DP2 L418C) (P)
MOONGOOL G683 (DP2 G683B)

Dam:

MD ALL TRADE U1059 PMC332642 (PED D1059E) (P)
WINN MANS SKAGGS 663X PMC336073 (OAC F663E) (P)
WINN MANS BEVERLY 663S FC358266 (PED B663E)
VENTURON ESTELLA R3 (VE7 R3E)
VENTURON ARCHIE (VE7 A18E) (P)
VENTURON HER MAJESTY (VE7 H28E) (P)
LINKLETTER A7E (LJA A7E)

43 VENTURON *Ultrasonic U30* (AI)(P)

Born: 17/03/2023 | Tattoo: VE7 23U30E | BPAF

PURCHASER: _____ \$ _____

	CE DIR	CE DTR	GL	BW	200	400	600	MCW	MILK	SS	CW	EMA	RIB	RUMP	RBY	IMF	\$ Index Values	
EBV	+5.5	-2.0	-3.1	+0.0	+4	+11	+16	+14	+9	+1.1	+13	+0.6	-1.1	-1.6	+0.9	-0.5	DTI (\$)	NMI (\$)
ACC	40%	31%	68%	72%	65%	62%	64%	56%	46%	64%	50%	43%	51%	49%	43%	42%	\$15	\$18



A bull we really thought long and hard about keeping and if we weren't already walking an Affinity son he wouldn't be going anywhere. We just love this bulls make up, he's so thick but with so much softness and was born small. If you are after a stud heifer mating sire who combines generations of great sires, we feel this guy is well worth the inspection. This bull's dam is a maternal sister to lot 35.

HOMOZYGOUS POLL

Sire:

LT RIO BRAVO 3181 P M665507 (OAU Y5507E) (P)
LT RUSHMORE 8060 PLD M760665 (PED D665E) (P)
LT BRENDA'S EASE 3055 PLD F979389 (PED -9389E)
LT AFFINITY 6221 M880381 (OAU M381E) (P)
WINN MANS LANZA 610S PMC307395 (OAC B7395E) (P)
LT ATHENA 1247 F1140204 (PED G204E)
LT SILVER ATHENA 7123 F1072979 (PED C2979E) (P)

Dam:

WINN MANS LANZA 610S PMC307395 (OAC B7395E) (P)
SPARROWS KINGSTON 139Y PMC341135 (OAC G139E) (P)
SPARROWS DELIGHT 374P FC349349 (PED Z374E)
VENTURON BRIGETTE S15 (VE7 S15E) (P)
VENTURON KEYSTONE (VE7 K14E) (P)
VENTURON BRIDGET P77 (VE7 P77E) (P)
VENTURON ELLI-MAE (VE7 E25E) (P)

44 VENTURON *Uranium U77* (AI)(P)

Born: 09/04/2023 | Tattoo: VE7 23U77E | BPAF

PURCHASER: _____ \$ _____

	CE DIR	CE DTR	GL	BW	200	400	600	MCW	MILK	SS	CW	EMA	RIB	RUMP	RBY	IMF	\$ Index Values	
EBV	+2.0	-5.1	-3.4	-1.8	+12	+22	+31	+28	+9	+1.3	+17	+1.3	+2.6	+3.4	-1.7	+0.7	DTI (\$)	NMI (\$)
ACC	34%	28%	69%	70%	62%	59%	60%	52%	39%	57%	46%	40%	51%	50%	42%	40%	\$22	\$56



Another Affinity son with added growth and performance. His mum is a big framed high performance Fan Favourite daughter who has a great udder.

POLLED

Sire:

LT RIO BRAVO 3181 P M665507 (OAU Y5507E) (P)
LT RUSHMORE 8060 PLD M760665 (PED D665E) (P)
LT BRENDA'S EASE 3055 PLD F979389 (PED -9389E)
LT AFFINITY 6221 M880381 (OAU M381E) (P)
WINN MANS LANZA 610S PMC307395 (OAC B7395E) (P)
LT ATHENA 1247 F1140204 (PED G204E)
LT SILVER ATHENA 7123 F1072979 (PED C2979E) (P)

Dam:

SPARROWS ESTEVEZ 471B PMC360350 (PED K471E) (P)
HRJ FAN FAVOURITE 804F QPMC750711 (OAC P804E) (P)
HRJ MISS PARIS 7S PFC392753 (PED B7E) (P)
VENTURON STARDUST S5 (VE7 S5E) (P)
CEDARDALE ZEAL 125Z MC345134 (OAC H5134E) (P)
VENTURON LILLY (VE7 L15E) (P)
VENTURON JANIS (VE7 J8E) (P)

45 VENTURON *U Did It U122* (AI)(P)

Born: 01/06/2023 | Tattoo: VE7 23U122E | BPAF

PURCHASER: _____ \$ _____

	CE DIR	CE DTR	GL	BW	200	400	600	MCW	MILK	SS	CW	EMA	RIB	RUMP	RBY	IMF	\$ Index Values	
EBV	+3.9		-2.1	-3.0	+7	+21	+15	+1	+10	+1.4	+17	+0.5	+1.4	+1.5	-1.2	+0.1	DTI (\$)	NMI (\$)
ACC	31%		67%	69%	60%	58%	59%	51%	36%	56%	45%	39%	50%	49%	41%	39%	\$20	\$51



Spring Born

We kick off the Springs with arguably the best bull in the sale. The first son of 4 Ways Mario we have offered. We first saw Mario at Beef 2018 and once we saw his sons at Bauhinia Park we had to use him. This bull is so long fronted, with an abundance of muscle and bone. He's made a lot of friends this year due to his charismatic appearance that commands your attention. An outcross pedigree in a homo polled package.

HOMOZYGOUS POLL

Sire:

TR RED SMOKE M723761 (OAU B6641E) (P)
MOONGOOL JAG (DP2 J159E) (P)
MOONGOOL ROSE 12 (DP2 F131D)
4 WAYS MARIO (4WC M68E) (P)
4 WAYS ADOO (4WC A34E)
4 WAYS ANNETTE D72E (4WC D72E)
MOUNT WILLIAM ANNETTE A96 (BS A96E)

Dam:

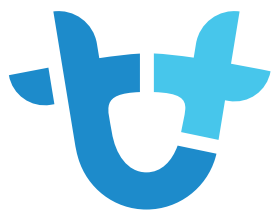
WCR SIR FA MAC 2244 M234430 (OAU B2244E) (P)
COOARA MISSION MAN (CX5 M7E) (P)
COOARA HALO (CX5 H5E) (P)
VENTURON CINTHIA Q10 (VE7 Q10E) (P)
VENTURON ARCHIE (VE7 A18E) (P)
VENTURON FARIDA (VE7 F3E) (P)
LINKLETTER A92E (LJA A92E)

46 VENTURON *Uptown Funk U208* (AI)(P)

Born: 01/09/2023 | Tattoo: VE7 23U208E | BPAC

PURCHASER: _____ \$ _____

	CE DIR	CE DTR	GL	BW	200	400	600	MCW	MILK	SS	CW	EMA	RIB	RUMP	RBY	IMF	\$ Index Values	
EBV	-2.4	-1.5	-4.2	+1.5	+12	+27	+39	+46	+6	+1.2	+25	+2.6	+0.0	-0.2	+0.9	+0.0	DTI (\$)	NMI (\$)
ACC	33%	27%	68%	67%	65%	60%	62%	52%	41%	56%	47%	37%	43%	41%	36%	36%	\$26	\$35



AuctionsPlus

How to register as an AuctionsPlus user/buyer

1. To sign up to AuctionsPlus, fill in your details and create a security PIN.
2. Verify your email and phone number.
3. Follow the steps to verify your ID.
4. Enter your PIC number, ABN and business details if relevant.
5. Carefully read and accept our user rules and responsibilities.
6. Complete the user quiz.
7. Submit your request to our team.



Scan to sign up now



Scan to see detailed
step by step instructions



CHAROLAIS DAMS



Venturon Clementine Q11 - Full sister to lot 36



Venturon Hillary H43 - Dam of lot 31, 34 & 38



Venturon Naughty But Nice N31 - Dam of lot 33 & 36



Venturon Madonna - Dam of lot 52



Venturon Hillary P27 - Dam of lot 50



Spring Born

One of softest made bulls in the sale with so much red meat in him. The only Sparrows Seminole son in the sale and one who deserves a spot in the front paddock. Appreciate the make up of this bull and what he has to offer the industry. This bulls figures should not be taken notice of as he is far better than they indicate. Due to him being out of an older cow with minimal data and a Canadian import bull whos numbers don't represent the true quality of him.
POLLED

Sire:

ABC EDMUND LATIN M439426 (PED -9426E)
ABC LATORO 263G MC214167 (PED -4167E)
ABC CHAR CHISPA F777043 (PED -7043E)
SPARROWS SEMINOLE 927W PMC326600 (OAC E927E) (P)
SPARROWS ALLIANCE 513G M469401 (PED -277E)
SPARROWS ANGEL EYES 258N PFC341625 (PED Y258E) (P)
SPARROWS ANGEL EYES 58L PFC322392 (PED W58E) (P)

Dam:

EC NO DOUBT 2022 P M685500 (OAU Z2022E) (P)
VENTURON FRANKIE (VE7 F10E) (P)
VENTURON BROWNIE (VE7 B2E) (P)
VENTURON LANA (VE7 L16E) (P)
VENTURON CRUSTY DEMON (VE7 C5E) (P)
VENTURON GINA (VE7 G7E)
VENTURON BELLE (VE7 B7E)

47 VENTURON *Uppin The Ante U215* (AI)(P)

Born: 03/09/2023

Tattoo: VE7 23U215E

BPAF

PURCHASER: _____ \$ _____

	CE DIR	CE DTR	GL	BW	200	400	600	MCW	MILK	SS	CW	EMA	RIB	RUMP	RBY	IMF	\$ Index Values	
EBV	+1.2	-1.4	-3.1	-1.5	-2	-2	-8	-10	+2	+0.3	+1	+1.5	+1.9	+2.1	-0.7	-0.3	DTI (\$)	NMI (\$)
ACC	39%	33%	71%	70%	64%	61%	63%	55%	49%	55%	50%	39%	49%	48%	42%	39%	-\$3	\$13



Spring Born

A blast from the past. A bull originally earmarked to be kept but when we assessed how much Mac we had through the herd we figured he'd be of better use in someone else's herd. An embryo we made back in 2001 and had on ice until a few years ago and here's the result. He's such a complete bull who has stood out for his sires presence and beautiful long body.
A 3 tick bull.
POLLED

Sire:

FRISBIE MAC POLLED 257 M185428 (OAU -53) (P)
WCR SIR FAB MAC 809 M202427 (OAU -57E) (P)
MISS LW FA BINGO 229 F159732 (OAU -54)
WCR SIR FA MAC 2244 M234430 (OAU B2244E) (P)
XXI CENTURY M169294 (OAU -55) (P)
WCR MISS CENTURY 920 TWN F354249 (OAU -58) (P)
MISS KENO 333 RF565074 (OAU -56)

Dam:

CULHAM LOTTO (CU1 L40E)
VENTURON PLUTO (VE7 P1E)
CULHAM MELCAT (CU1 M13D) (P)
VENTURON SCULLY (VE7 S4E)
MANDALONG FORD (RP F93E) (P/S)
BREAKAWAY JOY RIDE (4DJ J18D)
BREAKAWAY EDITH (4DJ E56C)

48 VENTURON *2244 Big Mac U189* (AI)(ET)(P)

Born: 26/08/2023

Tattoo: VE7 23U189E

BPAF

PURCHASER: _____ \$ _____

	CE DIR	CE DTR	GL	BW	200	400	600	MCW	MILK	SS	CW	EMA	RIB	RUMP	RBY	IMF	\$ Index Values	
EBV	-0.8	+3.1	-4.9	+0.4	+12	+28	+45	+48	-1	+1.4	+26	+2.7	+1.4	+2.4	-0.3	+1.0	DTI (\$)	NMI (\$)
ACC	51%	51%	65%	70%	67%	65%	65%	61%	61%	63%	56%	51%	56%	55%	51%	50%	\$30	\$63



Spring Born

The first son of our new imported Canadian sire HRJ Holy Water. Ultimum is a soft bull who is exceptionnaly quiet with a really good set of feet. Hes going to be a bigger framed bull whos calves will have added growth. His mum is a bigger framed slick coated female.

HOMOZYGOUS POLL

Sire:

LT LEDGER 0332 M791626 (OAU F3168E) (P)
HRJ DIRTY HARY 603D PMC710861 (PED M861E) (P)
HRJ MISS BREEZE 421B FC418806 (PED K8806E)
HRJ HOLY WATER 55H PMC802027 (OAC R2027E) (P)
MERIT ROUNDUP 9508W PMC326558 (OAC E6558E) (P)
JWX DANDY 70D PFC729048 (PED M9048E) (P)
RAMM BLONDIE 70B PFC408547 (PED K8547E) (P)

Dam:

PALGROVE GUNSMOKE G420E (PK G420E) (P)
BARDOO L112E (BDB L112E) (P)
BARDOO LAURA G54E (BDB G54E)
VENTURON EMMA P20 (VE7 P20E) (P)
VENTURON FRANKIE (VE7 F10E) (P)
VENTURON JEMMA (VE7 J3E) (P)
VENTURON EMMA (VE7 E3E)

49 VENTURON *Ultimum U220* (AI)(P)

Born: 08/09/2023 | Tattoo: VE7 23U220E | BPAF

PURCHASER: _____ \$ _____

	CE DIR	CE DTR	GL	BW	200	400	600	MCW	MILK	SS	CW	EMA	RIB	RUMP	RBY	IMF	\$ Index Values	
EBV	-3.1	+0.5	-3.8	+0.5	+14	+33	+41	+42	+5	+2.5	+21	-0.5	+0.4	+0.3	-1.1	+0.5	DTI (\$)	NMI (\$)
ACC	32%	25%	70%	66%	57%	54%	54%	47%	37%	53%	40%	36%	43%	41%	35%	35%	\$24	\$53



Spring Born

We really admire this bull for his length of body and overall muscle content. A maternal brother to Raise The Bar and by Holy Water. We think this bull is going to make a really impressive herd sire.

POLLED

Sire:

LT LEDGER 0332 M791626 (OAU F3168E) (P)
HRJ DIRTY HARY 603D PMC710861 (PED M861E) (P)
HRJ MISS BREEZE 421B FC418806 (PED K8806E)
HRJ HOLY WATER 55H PMC802027 (OAC R2027E) (P)
MERIT ROUNDUP 9508W PMC326558 (OAC E6558E) (P)
JWX DANDY 70D PFC729048 (PED M9048E) (P)
RAMM BLONDIE 70B PFC408547 (PED K8547E) (P)

Dam:

WINN MANS LANZA 610S PMC307395 (OAC B7395E) (P)
SPARROWS KINGSTON 139Y PMC341135 (OAC G139E) (P)
SPARROWS DELIGHT 374P FC349349 (PED Z374E)
VENTURON HILLARY P27 (VE7 P27E) (P)
VENTURON CRUSTY DEMON (VE7 C5E) (P)
VENTURON HILLARY (VE7 H43E) (P)
VENTURON ELLE (VE7 E16E) (P)

50 VENTURON *U Betcha U188* (AI)(ET)(P)

Born: 26/08/2023 | Tattoo: VE7 23U188E | BPAF

PURCHASER: _____ \$ _____

	CE DIR	CE DTR	GL	BW	200	400	600	MCW	MILK	SS	CW	EMA	RIB	RUMP	RBY	IMF	\$ Index Values	
EBV	+6.6	+0.1	-4.9	-2.0	+13	+27	+36	+27	+9	+3.4	+21	+0.3	+1.2	+1.3	-1.1	+0.3	DTI (\$)	NMI (\$)
ACC	35%	28%	65%	70%	62%	57%	58%	51%	41%	56%	43%	38%	46%	44%	37%	37%	\$29	\$77



Spring Born

Polled and gold. This bull has impressed since he was born. We loved his slick coat and ability to convert in a hard season. He is from our group of unregistered females who also raised our Reserve Champion Purebred carcass and highest scoring Charolais carcass at the 2024 Royal Adelaide Show steer feature show.

Sire:

ROSSO VL COMMISSIONER 62Q

51 VENTURON *Underdog U300*

Born: 22/08/2023

Dam:

VENTURON CHAROLAIS COW

PURCHASER: _____ \$ _____

	CE DIR	CE DTR	GL	BW	200	400	600	MCW	MILK	SS	CW	EMA	RIB	RUMP	RBY	IMF	\$ Index Values	
EBV																	DTI (\$)	NMI (\$)
ACC																		



Spring Born

The youngest bull in the offering and one who we feel is going to make an impressive bull. He's a PA free son out of our great Madonna cow who has always been one of our standout females in the herd. We have often been asked when Madonna will have a son in the sale and here he is. PA free and homo poll featuring two great ones from our herd.

HOMOZYGOUS POLL

Sire:

CEDARDALE YELLOWSTONE 25Y MC342657 (OAC G2657E) (P)
VENTURON KEYSTONE (VE7 K14E) (P)
VENTURON ELECTRA (VE7 E12E) (P)
VENTURON MAXIMUM IMPACT (VE7 M60E) (P)
VENTURON CRUSTY DEMON (VE7 C5E) (P)
VENTURON HILLARY (VE7 H43E) (P)
VENTURON ELLE (VE7 E16E) (P)

52 VENTURON *Uncle Kracker U250* (P)

Born: 18/10/2023

Tattoo: VE7 23U250E

BPAF

Dam:

CEDARDALE TYRANT 31T PMC310603 (OAC C603E) (P)
CEDARDALE ZEAL 125Z MC345134 (OAC H5134E) (P)
CEDARDALE MISS 64T (OAC C331E) (P)
VENTURON MADONNA (VE7 M2E) (P)
VENTURON FRANKIE (VE7 F10E) (P)
VENTURON KISMET (VE7 K7E) (P)
VENTURON GERALDINE (VE7 G28E) (P)

PURCHASER: _____ \$ _____

	CE DIR	CE DTR	GL	BW	200	400	600	MCW	MILK	SS	CW	EMA	RIB	RUMP	RBY	IMF	\$ Index Values	
EBV	-5.6	+0.8	-4.9	+0.3	+15	+31	+42	+33	+11	+1.0	+25	+2.4	+1.0	+1.3	+0.4	-0.2	DTI (\$)	NMI (\$)
ACC	44%	35%	69%	73%	64%	61%	61%	55%	44%	58%	47%	41%	50%	48%	41%	40%	\$29	\$55



Spring Born

A younger Maximum Impact son who displays all the right attributes to make a great commercial bull. He is going to be a bigger framed bull with a great hind quarter. These spring bulls have had a tough year but the potential in them shines through.

POLLED

53 VENTURON *Up The Impact U238* (P)

Born: 11/10/2023 | Tattoo: VE7 23U238E | BPAC

PURCHASER: _____ \$ _____

Sire:

CEDARDALE YELLOWSTONE 25Y MC342657 (OAC G2657E) (P)
VENTURON KEYSTONE (VE7 K14E) (P)
VENTURON ELECTRA (VE7 E12E) (P)
VENTURON MAXIMUM IMPACT (VE7 M60E) (P)
VENTURON CRUSTY DEMON (VE7 C5E) (P)
VENTURON HILLARY (VE7 H43E) (P)
VENTURON ELLE (VE7 E16E) (P)

Dam:

FF ABOUT TIME Y07 M804390 (PED G4390E) (P)
OW LEAD TIME 6294 PLD M875419 (OAU M6294E) (P)
OW MISS SANDCREEK 3031 PLD F1164145 (PED J4145E) (P)
VENTURON MELLCAT R14 (VE7 R14E) (P)
MNE BOLD VENTURE 38D PMC 166129 (OAC P38D) (P)
VENTURON LUSCIOUS (VE7 L7E) (P)
VENTURON COOL CAT (VE7 C23E) (P)

	CE DIR	CE DTR	GL	BW	200	400	600	MCW	MILK	SS	CW	EMA	RIB	RUMP	RBY	IMF	\$ Index Values	
EBV	-1.3	-0.1	-2.9	+0.7	+11	+24	+38	+28	+15	+1.3	+21	+2.4	+0.7	+0.8	+0.4	+0.1	DTI (\$)	NMI (\$)
ACC	44%	34%	69%	73%	63%	60%	60%	54%	44%	56%	46%	40%	48%	47%	40%	39%	\$24	\$52



The Thompson family

Thank you for attending our sale.
We wish you all the best with your purchases.
Thank you for choosing VL as your source of genetics.

FALLS

Livestock Transport

FINLEY

*Specialists in Stud Stock
Servicing all States Australia Wide*



Lockie Falls – 0429 826 342
www.fallslivestock.com.au



VENTURON WHITE SUFFOLK PERTH ROYAL SUCCESS



Supreme Interbreed Ram &
Supreme Exhibit of the Show



Supreme Interbreed Ewe



Interbreed Breeders
Group of three

**Thank you to all buyers across Australia
who supported us in our 3rd on-property sale.**
White Suffolk's sold to a top of \$3800 to "Yonga Downs Studs" Broomehill WA
Charollais sold to a top of \$3600 to "Allandale Charollais Stud", NSW

Venturon Livestock

Branding the next generation



BUYER NO.

Buyers Instruction Slip

Please complete and hand to Office staff to verify prior to livestock being moved

Trading Name: _____

Address: _____

Property Address: _____

Contact Name: _____ Number: _____

Delivery Contact Name: _____ Number: _____

Lots Purchased: _____

Email Address: _____

Delivery Instructions

Staying on Vendor's Property: Yes / No

If Not:

Picking Up Today: Yes / No (If No - please fill in below)

Carrier: _____

When: _____

Elders can no longer accept any written instructions for any insurance requirements on Stud Stock animals.

On the fall of the hammer, the purchaser becomes the legal owner.

Please contact your own insurer direct.

Signature: _____

UPPING The ANTE

Venturon Livestock

Branding the next generation

SELECT SIRES OF OUR FUTURE



SVY Mayfield 30H



Venturon Talladega T192



Venturon Showbiz 161S



Brooklana Emperor Q23



IT'S AS SIMPLE AS BLACK & WHITE